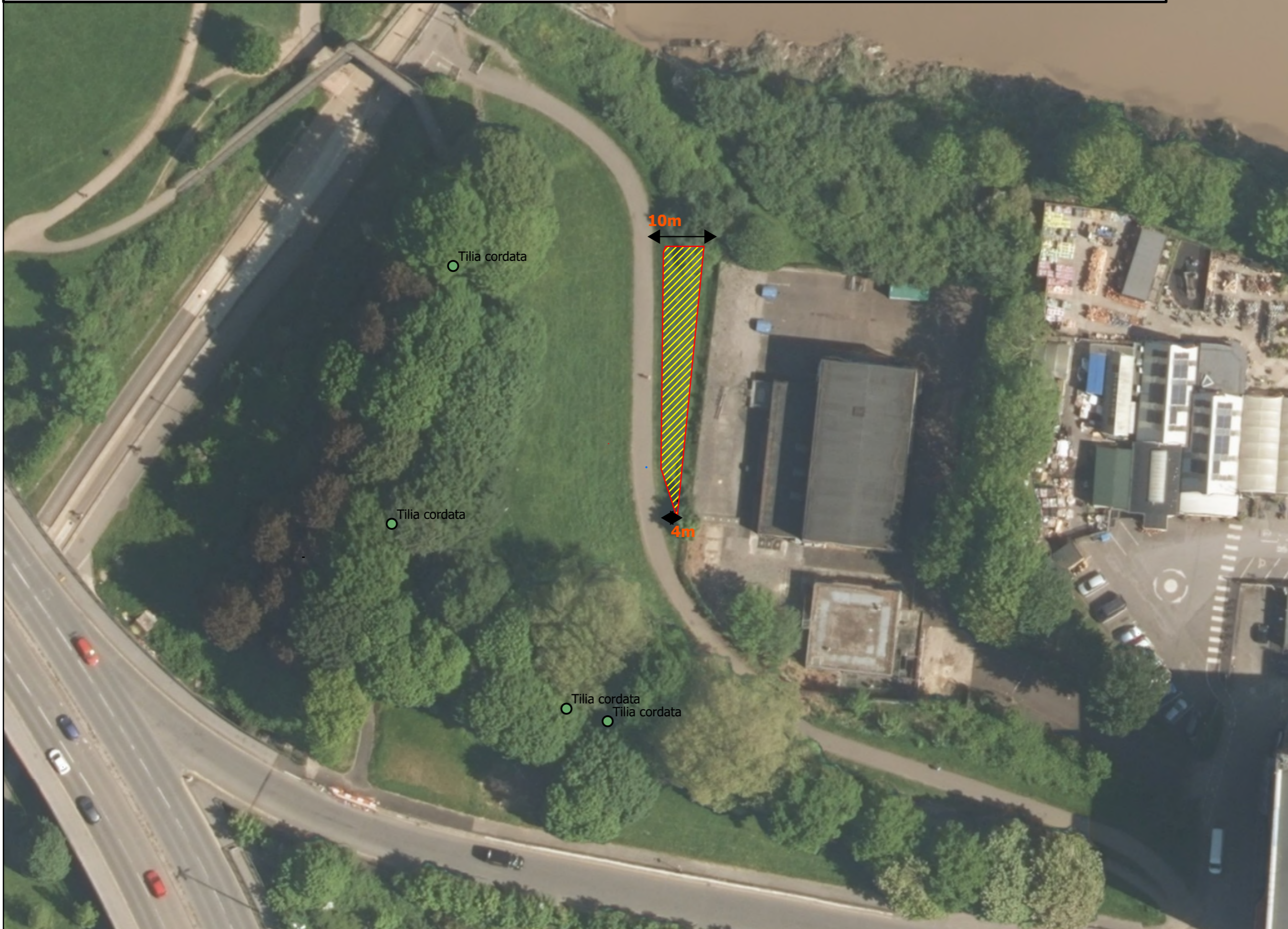


Tree plan consultation: Cumberland Basin South - adj. Ashton Avenue pumping station



Bristol City Council

For comments please email:
onetreeperchild@bristol.gov.uk

by
Monday 15th
December 2025

Community orchard x
10 trees,
4 x replacement
specimen trees

onetreeperchild@bristol.gov.uk



One Tree Per Child
Website link



The provision of information by Bristol City Council does not imply a right to reproduce or commercially exploit such information without the Council's express prior written permission. Reproduction or commercial exploitation of information provided by the Council without its express permission may be an infringement of copyright.

The council is unable to grant permission to reproduce or re-use any material that is the property of third parties. Permission to reproduce or re-use such material must be obtained from the copyright holders.

© Crown Copyright and database right 2025.
N Ordnance Survey 100023406.

PARKS & GREEN SPACES

Scale: 1:549 @A3
Date: 25/11/2025



GROWTH & REGENERATION DIRECTORATE
MANAGEMENT OF PLACE
BRISTOL PARKS SERVICE
One Tree per Child,
Blaise Plant Nursery,
Kings Weston Road, Bristol, BS11 0XF.
onetreeperchild@bristol.gov.uk
www.treebristol.com

For comments: onetreeperchild@bristol.gov.uk by 15th December 2025