



GUIDANCE

DEPRIVATION DECILES 2025

1. DEPRIVATION INDICES

- 1.1 The Ministry of Housing, Communities and Local Government (MHCLG) published new 2025 Indices of Deprivation for England on 30 October 2025. This release updates the English Indices of Deprivation 2019. The Index of Multiple Deprivation (IMD) is the official measure of relative deprivation in England and is part of a suite of outputs that form the Indices of Deprivation (IoD).
- 1.2 The English Indices of Deprivation measure relative not absolute levels of deprivation in 33,755 small areas or neighbourhoods, called Lower Layer Super Output Areas¹, in England. The indicators used to construct the Indices of Deprivation 2025 (IoD2025) are based on the most up-to-date information available when the IoD2025 was compiled.
- 1.3 Overall, a total of 55 indicators comprise the Indices of Deprivation 2025, an increase from 39 in the IoD19. Of these, 20 are new indicators, 14 indicators have been significantly modified, while 21 have been updated to more recent timepoints. 3 indicators have also been removed.
- 1.4 The Indices are an important tool used by national and local organisations to target resources, develop policy and support decisions about addressing local needs. The Indices are also frequently used to support funding allocations, inequalities analysis, area profiles, in bids for funding and in academic research.
- 1.5 The Index of Multiple Deprivation ranks every small area in England from 1 (most deprived area) to 33,755 (least deprived area).
- 1.6 There are different approaches to how to analyse IoD using deprivation deciles.

¹ Lower Super Output Areas (LSOAs) were created by the Office for National Statistics (ONS) for the reporting of small area statistics. They are designed to follow local authority boundaries, be of similar size across the country and be socially homogeneous.

2. DEPRIVATION DECILES

2.1 Deprivation deciles are used to examine the experience of individuals, families or communities in terms of the level of deprivation of the area in which they live.

2.2 Deprivation deciles are commonly used to:

- Identify areas of highest deprivation
- Measure inequalities
- Explore whether different levels of deprivation are associated with differential life outcomes
- Benchmark an areas deprivation relative to other areas of the country

2.3 Deprivation deciles can be analysed in two different ways:

- National - LSOAs in the national deciles of deprivation across England
- Local – deciles of deprivation within a local authority area (eg Bristol)

ENGLAND DEPRIVATION DECILES

2.4 Ranking all LSOAs in England from the most deprived (rank 1) to least deprived (rank 33,755) and then dividing into ten categories (deciles) across the whole of England (Figure 1).

Figure 1. Allocation of England deprivation ranks to national deciles

Source: Strategic Intelligence and Performance, Bristol City Council

Decile	% rank	Rank	
1	1-10%	1	3,375
2	10-20%	3,376	6,751
3	20-30%	6,752	10,126
4	30-40%	10,127	13,502
5	40-50%	13,503	16,877
6	50-60%	16,878	20,253
7	60-70%	20,254	23,628
8	70-80%	23,629	27,004
9	80-90%	27,005	30,379
10	90-100%	30,380	33,755

2.5 England deprivation deciles indicate how deprived that area is relative to England as a whole. England deprivation deciles are the default ranking provided by the MHCLG.

BRISTOL LOCAL DEPRIVATION DECILES

- 2.6 Ranking all 2021 Lower Super Output Areas (LSOAs) in the Bristol local authority from the most deprived (rank 1) to least deprived (rank 268) and then dividing into ten categories (deciles) with approximately equal numbers of LSOAs in each (Figure 2) using Public Health England guidance².

Figure 2. Allocation of Bristol deprivation ranks to local deciles

Source: Strategic Intelligence and Performance, Bristol City Council

Decile	Rank out of 268 LSOAs	
1	1	27
2	28	54
3	55	81
4	82	108
5	109	134
6	135	161
7	162	188
8	189	215
9	216	242
10	243	268

- 2.7 A look-up file is available on the [Bristol City Council deprivation web page](#) which allocates each individual LSOA21 to its Bristol deprivation decile. The look-up file can be used to assign LSOA data - eg population estimates, equalities statistics, quality of life survey results - to local deprivation deciles, in order to be able to show inequalities.
- 2.8 Local deprivation deciles indicate how deprived that area is relative to other small areas within the same local area. This briefing note is primarily to support those situations where we need 'Bristol local deprivation deciles'.

QUINTILES AND OTHER CATEGORIES

- 2.9 Whilst most analysis is done using the ten deciles of deprivation, it is also possible to aggregate these into a smaller number of categories such as quintiles (where the city is divided into 5 categories, not 10). If quintiles etc are used, the same approaches as above could be applied.

² [Public Health Technical Guidance – Assigning deprivation categories](#)

3. USE OF DEPRIVATION DECILES

- 3.1 Deprivation deciles are used in two main ways – to measure inequality *within* Bristol, and to benchmark levels of deprivation in Bristol relative to other parts of the country.
- 3.2 When making comparisons of areas within Bristol, the approach taken by the Bristol City Council Insight, Performance and Intelligence service is to use the Bristol local deprivation deciles. This is also the formal approach used by the Office for Health Improvement and Disparities (formerly Public Health England) when making comparisons between the most and least deprived areas in Bristol.

USE OF BRISTOL LOCAL DECILES – TO MEASURE INEQUALITIES

- 3.3 Local categories can be used to provide a measure of inequality *within* Bristol. They are also best for trend analysis as this approach is less influenced by unconnected changes in other parts of the country.
- 3.4 There are different ways that inequalities shown by local deprivation deciles can be presented:
 - a) **Most deprived areas** - this is the outcome measure for people living in the 10% most deprived areas within Bristol, which can be used as a proxy to highlight inequalities.
 - b) **Comparison gap with city average** – this takes the outcome measure for the 10% most deprived areas and compares it with the outcome measure for the city average (ie the Bristol overall figure). For example, this approach is taken for the Deprivation Gap in the [Bristol Quality of life survey](#)
 - c) **Gap between most and least deprived deciles** – this takes the outcome measure for the 10% *most* deprived areas and compares it with the outcome measure for the 10% *least* deprived areas. For example, this approach is taken for the Public Health Life Expectancy gap – see [JSNA Data Profile](#)

USE OF ENGLAND DECILES – TO BENCHMARK

- 3.5 England deciles enable the comparison of deprivation in Bristol relative to deprivation in other areas in England. England deciles are best used for benchmarking against other areas, as well as for bidding for national funding or resources.

REFERENCING

3.6 When using deprivation deciles, it is important to make clear whether *local* deprivation deciles are being used or *national* deprivation deciles.

4. COMPARISON OF BRISTOL LOCAL DEPRIVATION DECILES AND ENGLAND DEPRIVATION DECILES

- 4.1 Bristol local deprivation deciles divide Bristol into 10 categories with more or less equal numbers of LSOAs and population. In the most deprived Bristol decile there are 27 LSOAs and in the least deprived decile there are 26 LSOAs.
- 4.2 If Bristol LSOAs are allocated to deciles based on the England rank, then this gives a different picture. In this case there are 30 LSOAs in the most deprived national decile and 21 LSOAs in the least deprived national decile. This is illustrated in figure 3 and figure 4.

Figure 3. Number of people (mid-2024) living in Bristol local deprivation deciles compared to number of people living in England deciles

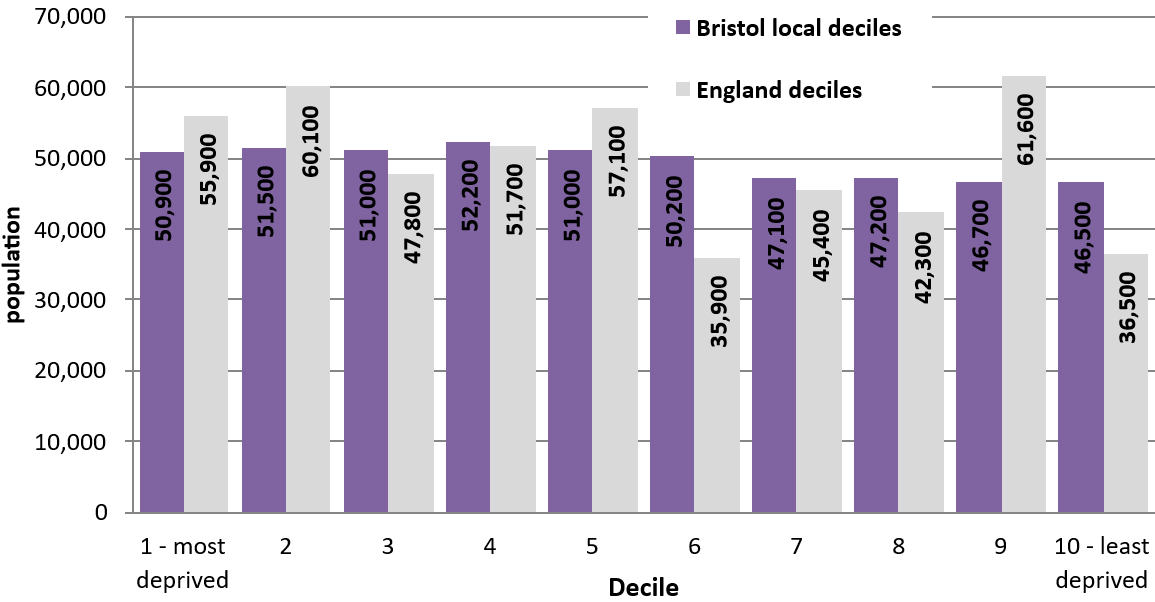
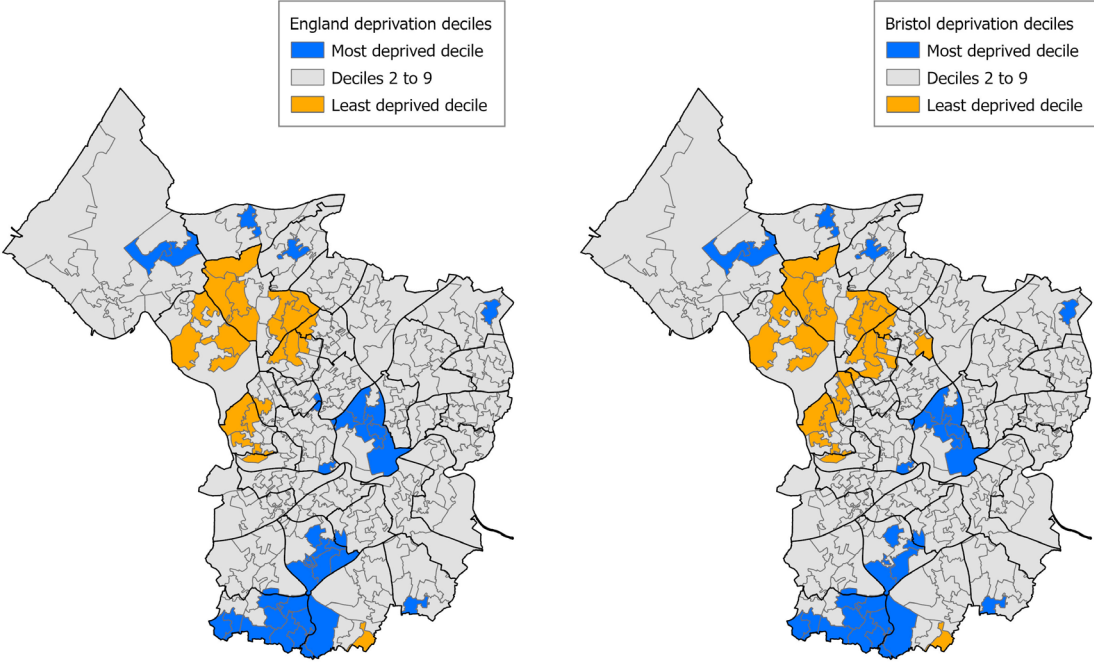


Figure 4. Bristol LSOAs by 2025 England deprivation decile and 2025 Bristol deprivation decile



Source: Strategic Intelligence and Performance, Bristol City Council
 Data: MHCLG English Indices of Deprivation 2025
 Boundaries: ONS licensed under the Open Government Licence v.3.0.
 © Crown Copyright and database right 2025. Ordnance Survey AC0000807971.

	England deciles	Bristol deciles
Bristol LSOAs in most deprived 10%	30	27
Bristol LSOAs in least deprived 10%	21	26

5. FURTHER INFORMATION

5.1 MHCLG have published [English indices of deprivation 2025: statistical release](#) together with a full [research report](#), [technical report](#), [rural report](#) and comprehensive [guidance documents](#) accompany this release, along with a series of supporting data tables, a range of spatial data geo-packages and a [Local Deprivation Explorer](#) to aid user’s access and interaction with the data.

5.2 See [Deprivation](#) web page for the latest analysis.

5.3 Please contact:
 Strategic Intelligence and Performance
 Bristol City Council
jayne.mills@bristol.gov.uk or research@bristol.gov.uk