



Bristol Impact Fund

Growing the Power of Communities



Contents



3 Foreword

4 Introduction

5 Strategic fit

6 About the Bristol Impact Fund

6 What we want to achieve

7 Programme impacts

7 Seven ways of working

9 Funding priorities

10 Demonstrating impact

10 Outcomes

11 Core indicators

12 Making an impact model

13 Monitoring, evaluation and learning

14 Funding approach

14 Small grants

15 Medium/Large Grants

16 How to apply

17 Appendix

17 Glossary

19 Summary of Available VCSE funding



Foreword



Councillor Asher Craig, Deputy Mayor with responsibility for Communities, Equalities and Public Health

Voluntary, Community and Social Enterprise (VCSE) organisations are a crucial part of what makes Bristol such a creative, dynamic and progressive city. We have seen the power of communities to make a difference during the pandemic and they are at the heart of our city's response to the continuing challenge of COVID-19. So, we are delighted to have a second round of grant funding, with the aim of strengthening communities most impacted by inequality.

The Bristol Impact Fund is a great success story for the city. The first round of grants in 2017 made a real impact by empowering communities to take action on the things that make a difference to them. Since the launch of the Bristol Impact Fund (BIF) in 2017, 70 organisations and 7,000 volunteers have worked on projects to tackle inequality, improve health and wellbeing and increase resilience across the city.

I have seen first-hand the work of many BIF funded projects across Bristol that have made a significant contribution to reducing disadvantage and tackling inequality, through a lens of building social capacity and capital, and developing community resilience and self-determination.

The second Bristol Impact Fund puts community building at the forefront of our strategic response to tackle inequality and the impact of the pandemic. We know that to build a resilient city, we need to invest in VCSE organisations who are deeply rooted in their communities and provide trusted support. We are asking every VCSE organisation applying for the fund to work in ways that enables the city to build back better and grow the power of communities.



Introduction



This overview document sets out the vision for the second round of the Bristol Impact Fund, running from October 2021 – September 2025, and is intended to provide a clear framework to those wishing to apply for funding.

Community and voluntary organisations in all their diversity are a reflection of Bristol citizens' drive and determination to improve their own communities – communities of place and communities of interest. Communities coming together and creatively using the resources we have is at the heart of our city response to the continuing challenge of COVID-19. Grant funding has been an important part of this.

Whilst COVID-19 showed so much that was positive about our city, it also left us in no doubt about the inequality and its impact. The cost of persistent, ingrained inequality in the lives lost became clear, as did the gaps in our systems. We can only build back better if we strengthen the power and voice of the communities that experience the greatest inequity to take their rightful place at the heart of city life.

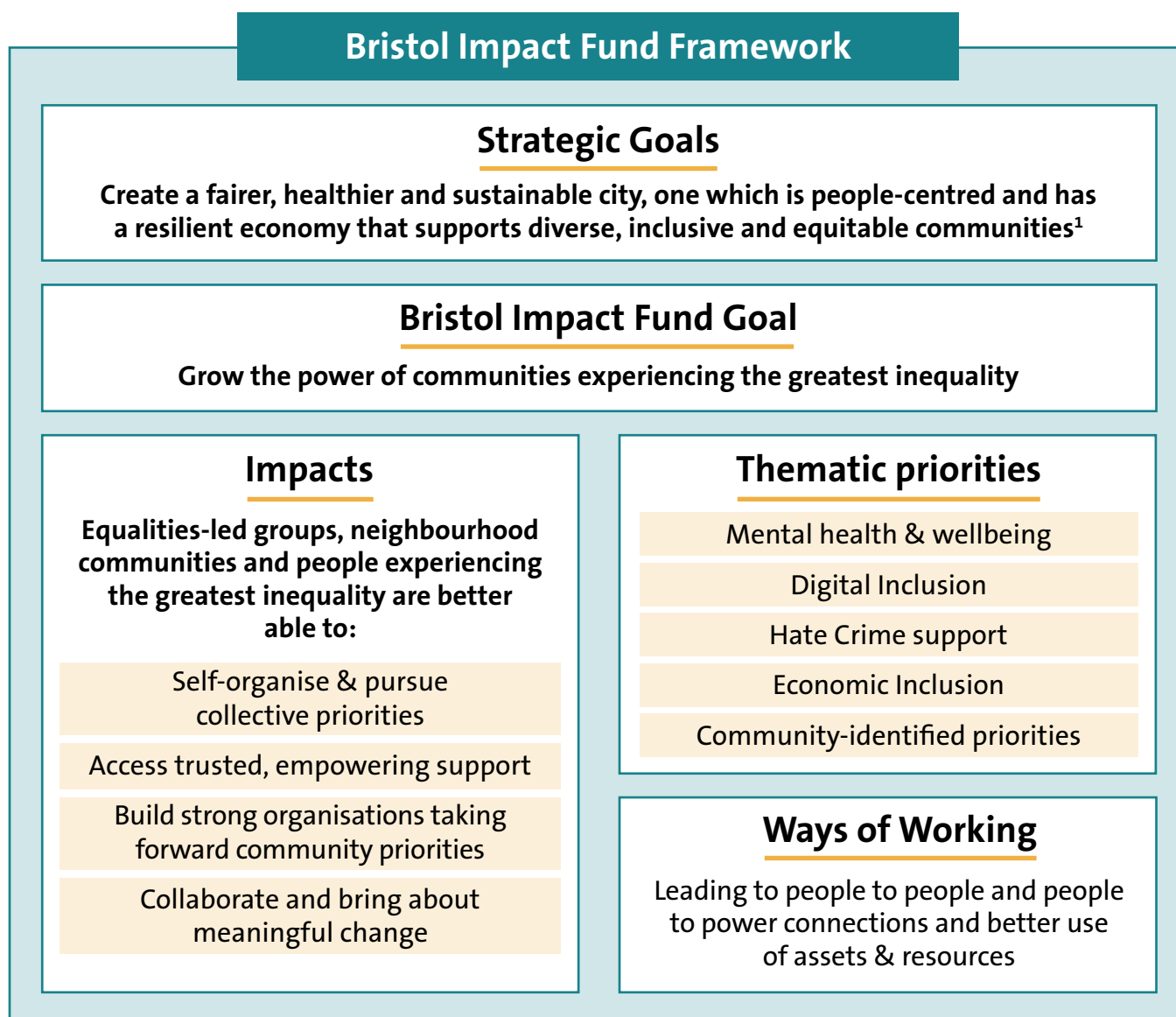


Strategic fit

The One City Plan, Economic Recovery Strategy, the report of the Director of Public Health and the City Council's own Corporate Strategy all recognise that inequity in the city is only set to widen as a result of the deep economic and health impact of COVID-19. Empowering those communities most impacted by systemic inequality is essential for our long-term city resilience.

The second round of the Bristol Impact Fund is putting a focus on growing the power of communities by investing in proactive community building activity. It is a four-year investment in the community and voluntary sector to empower citizens. This in turn will build social capital, improve health and wellbeing, and strengthen local economies and our city's resilience.

The figure below sets out the conceptual framework for the second Bristol Impact Fund:



¹One City Economic Recovery Statement of Intent, published June 2020

About the Bristol Impact Fund



© Borderlands

What we want to achieve

The goal of Bristol Impact Fund (BIF) is to grow the power of communities that experience the greatest impact of systemic inequality - both communities based in a neighbourhood and communities with shared experience of inequality. The fund will enable people to come together in their communities to make strong connections and take action on the issues that matter most to them.

We have seen how the COVID-19 pandemic has deepened existing inequalities in Bristol. Discrimination and inequity drives poverty (low skilled insecure work, depressed local economies); health inequality (shorter life, emotional and mental distress) and social exclusion. We also recognise that there is an imbalance of power in the city; that the lives of working class communities, Black, Asian and ethnic minority communities, younger people, older people, lesbian, gay and bisexual people, transgender people, women, faith groups and disabled people are impacted by decisions and services determined by others. To make greater progress in addressing these, affected communities need the space, resources and support to empower themselves - to connect people to people and people to power, pursue their priorities, develop better ways of doing things and be properly represented in decision making and service provision.

We recognise that we will only improve our city's resilience if we strengthen the power and voice of Bristol's diverse communities that experience inequality to take their rightful place at the heart of city life.



Programme impacts

The Bristol Impact Fund will deliver four impacts over its four-year programme.

Equality-led groups, neighbourhood communities and people experiencing the greatest inequality will be better able to:

- Support one another, self-organise and use their collective assets (e.g. interests, skills, experience, time, buildings, resources) to pursue collective priorities and solve shared problems
- Access trusted, empowering support and services which facilitate people to people connections, inclusion and participation in community life
- Build strong and sustainable Voluntary, Community and Social Enterprise (VCSE) organisations to take forward community priorities
- Be in a strong position to collaborate with Bristol City Council and the One City Partnership to understand and work to address inequality caused by poverty and low income, class, racism, sexism, disablism, heterosexism, faith-based discrimination or ageism and bring about meaningful change for people experiencing these inequalities.

Seven Ways of Working

To achieve the overall goal and impacts there are seven ways of working which sit at the heart of our approach. They are a direction of travel. The focus is on empowering people and communities and making best use of existing assets, connecting people to people and people to power. These ways of working will produce social capital and deliver significant health, wellbeing and economic benefit for both citizens and communities in addition to progress against the chosen priority.

Successful applicants will be able to demonstrate their commitment to apply and embed the ways of working and learn together. It is understood there will be a phased approach over the four years. As part of the Bristol Impact Fund process we want to understand more about what works and what doesn't, and we are committed to supporting this process.



The ways of working:

Way of working	Examples
Equitable	Demonstrate positive action to redress inequity (level up) Build and strengthen equalities-led groups (which often work city wide)
Inclusive	Be proactive and intentional about inclusion Remove physical, attitudinal, cultural, environmental and economic barriers Find respectful, creative ways to empower people and communities who are routinely excluded from community and city life
Asset* based	Take the time to discover, then build on the assets that are already in the community *Assets are people – our interests, time, experience, skills, networks, community and voluntary groups. Assets are also money, buildings, land, the local corner shop, nursery, sheltered housing, businesses and services.
Place based	Continue to build strong, connected communities where people come together, self-organise and shape the future of their communities Encourage many more people to connect and expand the opportunities in their local area
Relational/ Relationship-oriented	Connect people to people, people to power and organisations to each other
Citizen-led	Encourage and nurture citizen action - by and for the people Encourage and enable community-led activity – people with shared experience or interest coming together to find solutions Grow collective skills, knowledge, confidence, curiosity and self-determination
Nurturing the community and voluntary sector eco-system	Strengthen organisations which can help tackle the structural inequality Encourage larger organisations to share their assets (by which we mean people, skills, experience as well as potentially buildings and other physical resources) with smaller organisations & informal networks to build community connection and collaboration Encourage organisations to have deep roots into communities Foster cultures of learning and co-creation

Funding priorities

Priority 1 (Community building priority)

To achieve the overall goal, we will prioritise applications that strengthen the capacity of equality-led groups, neighbourhood communities and people experiencing the greatest inequality by:

- Building strong community connections: connecting people to people, people to power
- Making the best use of and build on their skills, experience, networks and resources to drive forward the community's key priorities and produce a sustainable way forward
- Facilitating inclusion and participation in community life.

Priority 2 (Thematic priorities)

Applications will also need to make an impact in their chosen thematic priorities. These can either be:

a. **Community priorities**

We want to empower community and voluntary organisations to pursue the priorities which are particularly important to their communities.

Our aim is for funding to follow the priorities determined by communities and what is most important for them. If a community has been working on a priority for some time and it has the potential to impact positively on citizens, we do not want them to be diverted because their priority is not explicitly named on a list.

b. **Priorities identified by the VCSE research, “Designing a New Social Reality”²:**

- Digital inclusion
- Economic inclusion³
- Mental health and wellbeing
- Hate crime.

All applicants will need to set out a clear reason for their chosen priorities and how they will apply the ways of working. It is understood that these priorities may evolve over the four years of the grant.

²This report will be published in mid-March 2021. Information about the research can be found at www.blacksouthwestnetwork.org/vcse-research and the report will be available to download from: www.blacksouthwestnetwork.org/reports/research-reports

³For example, initiatives that allow systemically disadvantaged groups to enter/re-enter the job market



Demonstrating impact

Outcomes

Successful applicants will be required to link their contribution to the four programme impacts through the following outcomes:

In places and communities which experience the greatest inequality:

Outcome 1

Applicants will propose relevant outcomes and measurable indicators relating to their priority:

- Community-identified priorities which will achieve positive change
- Improving mental health and wellbeing
- Supporting digital inclusion or the impact of digital poverty
- Supporting communities experiencing hate crime
- Supporting economic empowerment and inclusion.

Applicants will also deliver against outcome 2 and/or outcome 3:

Outcome 2

People are supported to make people to people connections and participate in community life making the best use of community assets.

Outcome 3

People who experience the greatest inequality are shaping and leading their communities and the life of the city.

We will also want to consider evidence the city is changing in response to the experience, insight and good ideas of equalities groups. For communities experiencing inequality to be more involved in city life and decision-making, we recognise a change is needed in the way the city works.

To achieve this, we will ask applicants to:

- a. Set out a Theory of Change by answering the questions set out in the application form and which are demonstrated in the making an impact model on [page 12](#).
- b. Propose outcomes and indicators relevant to the proposal and work with us in the first year of the Bristol Impact Fund programme to develop our approach to evaluate impact, including exploring how we might align indicators and outcomes.





Core indicators

We propose a short set of core indicators for Outcomes 2 and 3, which applicants can choose from.

Outcome 2: People are supported to make people to people connections, and participate in community life making the best use of community assets

Number of people who have gained knowledge, skills and confidence (in a relevant area of their life or in making a change in their community)

Number of people making new connections

Outcome 3: There is evidence people who experience the greatest inequality are shaping and leading their communities and the life of the city

Number of people taking action to change/develop their community

Number of people who now feel that they can influence decisions that affect them / their community



Making an impact model

We have chosen these questions to help organisations show us how and why their proposals will have an impact on communities experiencing the greatest inequality. The questions are:

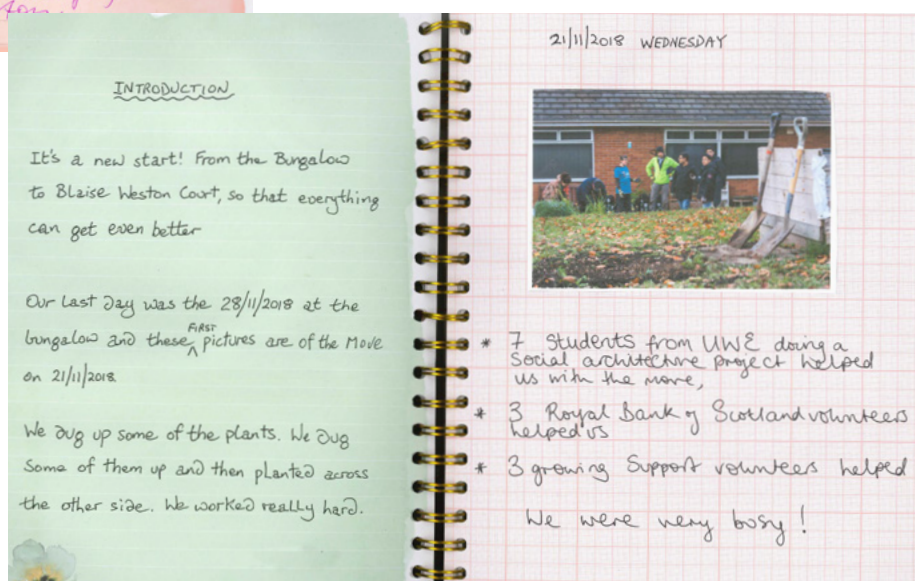
- 1** What are the priorities that you will focus on, and how do you know they are the priorities of the community? 
- 2** What existing assets will you build on? 
- 3** What will you do and how will you work to have an impact on your chosen priorities? 
- 4** How will you grow the power of communities in the way you work? 
- 5** Why do you think this will create change? 
- 6** What outcomes will you expect to see if your work is successful? 
- 7** How will you evidence progress in outcomes and what are you aiming for in terms of scale of participation/ change? 



Monitoring, evaluation and learning

Building on the learning from the first Bristol Impact Fund, there will be an allocation of 4% per year from the overall fund to support evaluation and understanding of the impact of the second round of Bristol Impact Fund.

We are open-minded about the approach to evaluation and learning. We will work with grantees to develop the approach during the first 6 months of the programme and agree ways of working towards common goals and align monitoring and learning. We want the exercise to be meaningful and beneficial to grantees, to inform the work but also help tell the story of what's been achieved and the value of the investment made. A lot of work has been done in this field and there are different ways to approach it, including the involvement of an external evaluator for the duration of the programme.



© Alive Activities

Funding approach

The second Bristol Impact Fund will have a budget of £1.45 million in year 1 and then £1.65 million for years 2, 3 and 4 each, totalling £6.4 million over four years.

Small grants

Existing small grants end on 31 December 2021. New small grants will start on 1 July 2022.

The purpose of the small grants fund is to encourage new ideas and involvement from more diverse communities. We will take positive action to reach communities under-represented in the medium and large grants awarded in October 2021. We particularly want to encourage proposals which are led by or build capacity of younger people aged 16 to 24. We are aware that the economic impacts of COVID-19 will have a negative impact on young people, and we would like to support work which strengthens their voice in the city.

There will be two rounds of Small Grants, each lasting 18 months and with £150,000 available in each round, making a total allocation of £300,000 to Small Grants across the Bristol Impact Fund programme

- Round 1: July 2022 – December 2023
- Round 2: January 2024 – June 2025

Individual small grants will range between £2,500 and £10,000 per year.



Medium/Large Grants

Medium and large grants will run for the whole of the four-year funding period: 1st October 2021 to 30th September 2025.

There will be the option of a nine month development period to fully develop collaborative ways of working, apply the community building ways of working and move from crisis response. Not all organisations will need this time, but we expect it to be particularly helpful to smaller equalities-led organisations less experienced in making applications.

To increase the number of grants awarded there will be an upper limit of £200k per application. The average grant to a single organisation is expected to be around £50k. Exceptional applications of over £100k will be high quality, demonstrating very strong community building principles and be very well placed to make a significant impact.

We propose:

- Individual Medium Grants range between £10,001 and £49,999 per year
- Individual Large Grants range between £50,000 and £200,000 per year
- Up to £355,000 per year for a collaborative application to support people and communities who experience hate crime and discrimination.
- No organisation receive more than £100k per year across the programme (the exception to this is for organisations which are part of a collaborative application to deliver hate crime support)
- We expect all applicants to be able to demonstrate informal collaborations in the way they work with others
- We will accept Partnership applications from several organisations working together.

Hate Crime Support

The second round of Bristol Impact Fund will consider proposals of up to £355,000 per year to provide support to people who experience hate crime whilst also putting a clear focus on prevention. All of the Bristol Impact Fund ways of working apply.

This is in recognition of the increased occurrence and threat of hate crime in the context of Brexit, COVID-19 and reaction to the Black Lives Matter movement, and the undermining impact of hate crime on the resilience of equalities communities in the city.



Hate crime is experienced by a wide group of people including disabled people, Black, Asian and minority ethnic people, lesbian, gay, bisexual and transgender people, women, and faith communities.

It is proposed the overall allocation for hate crime and discrimination remains the same as 20/21. However, this time the approach will include all ages (under the first round of Bristol Impact Fund it was over 16's) and will have a clear focus on prevention as well as one to one support.

Applicants will need to address:

- a. Support for people who experience hate crime and discrimination of all ages
- b. How they will work in collaboration with others to develop and nurture approaches which increase community cohesion and the skills, knowledge and capacity of citizens and communities to prevent hate crime.

Bristol City Council want to be a partner in this process.

Applicants will propose how the funding is allocated to achieve the outcomes.

How to apply

Please refer to the detailed guidance document for more information on how to apply.

The application window for medium and large grants is below. Applications for small grants will not open until 2022.

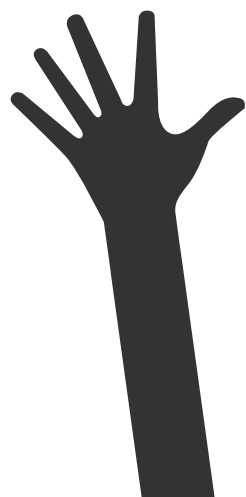
Applications open (10 week)	9 th March 2021 (midday)
Applications close	17 th May 2021 (midday)
Grants evaluation	May/June 2021
Grants decision communicated to applicants	July 2021
Funding agreements	Sept 2021
Commencement of new period of grant funding	1 st October 2021



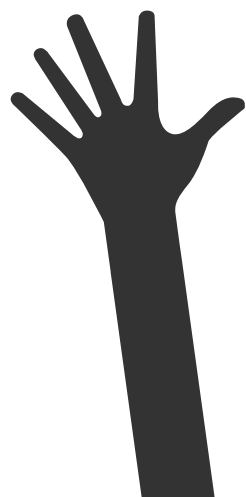
Appendix

Glossary

Asset	A useful or valuable thing or person – assets can include interests, skills, experience, time, buildings and resources
Capacity	The ability or power to do or understand something
Community	People living in the same place or having a particular characteristic, interest or experience in common
Communities of place	Communities that organise around a local area or neighbourhood
Communities of interest	Communities that organise around a shared characteristic, experience or interest – in this context, people with shared experience of inequality
Eco-system	A complex network or interconnected system
Empowering	Something that is empowering makes you more confident and makes you feel that you are in control of your life
Equalities groups	People who experience systemic inequality
Equalities-led groups	Organisations where the majority of trustees, staff or members identify as BME, Disabled, LGBTQ+ or from another equalities group.
Equity	Equity is often related to justice or proportional fairness. Equality differs from equity in that it relates more to sameness or equal distribution. In society, equal treatment does not always produce an equitable result.
Facilitate	Enable
Heterosexism	Discrimination or prejudice against gay people on the assumption that heterosexuality is the normal sexual orientation



Indicator	A specific, observable and measurable characteristic that can be used to show changes or progress a programme is making toward achieving a specific outcome
People to people	Connections and relationships between people based on mutual interests and shared concerns
People to power	Connections and relationships between people and decision making authorities, institutions or others in a position of power which gives people meaningful influence over decisions and services which impact on their lives
Persistent	Long lasting
Resilience	To be strong and able to cope. Resilient communities are ones that can use local resources and expertise to help themselves. Some people and organisations use the term 'readiness' instead of resilience.
Relational	The way in which two or more people or things are connected
Resources	A useful or valuable possession or quality of a country, organization, or person
Social capital	Using relationships at all levels to contribute to collective wellbeing e.g. personal relationships, social network support, civic engagement and trust and cooperative norms
Systemic inequality	The unequal outcomes built into our institutions that will produce inequality, whether biased individuals are present or not. These systems and structures create disparities in wellbeing indicators such as wealth, the criminal justice system, employment, housing, health care, politics and education which makes it more challenging for people experiencing inequality to participate in society and in the economy.

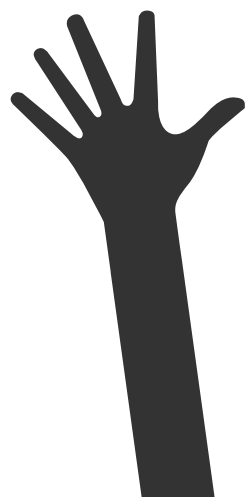


Summary of Available VCSE funding

Other Bristol City council grants opportunities

Bristol City Council: Information Advice and Guidance Grant	
Total annual amount available	£560,000
Duration/term of grant	1 st April 2019 to 31 st October 2021 with the option to extend for a further two and a half years to 30 th April 2024.
Purpose of grant	Provision of a community based advice network providing generalist and specialist services across the city.
Eligibility requirements for organisations	Bristol based VCS organisations (charitable or not for profit) who were in possession of the Legal Services Commission Quality Mark who comply with BCC Baseline Standards.
Date of next application round	This grant is in place until 31 st October 2021. It will be reviewed then.
Contact email and website address for further information	investmentandgrants@bristol.gov.uk

Bristol City Council: VCS Infrastructure Support Grant	
Total annual amount available	£316,608
Duration/term of grant	Current grant run until 31 st September 2022
Purpose of grant	To provide support in developing the voluntary sector
Eligibility requirements for organisations	Charitable or not for profit organisations with a track record of VCS infrastructure support.
Date of next application round	TBC
Contact email and website address for further information	investmentandgrants@bristol.gov.uk



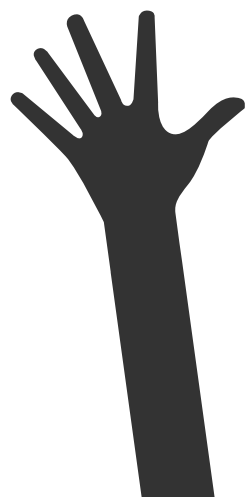
Bristol City Council: Cultural Investment Program - Originators Fund	
Total annual amount available	£100k per annum
Duration/term of grant	1 year
Purpose of grant	Grants available from £500 to £5k to make Arts and Culture accessible for all Bristol citizens Priorities for the fund include arts and culture activity in neighbourhoods in the lower 10% of multiple deprivation, and with Bristol citizens with protected characteristics
Eligibility requirements for organisations	Priority is given to projects delivered by Bristol based individuals, community groups and organisations.
Date of next application round	Open for applications in winter 2020/21 for grants issued in April 2021.
Contact email and website address for further information	cityartsfund@bristol.gov.uk www.bristol.gov.uk/museums-parks-sports-culture/arts-and-culture-funding

Bristol City Council: Cultural Investment Program: Imagination Fund	
Total annual amount available	£230k per annum
Duration/term of grant	2 years
Purpose of grant	Up to 2 years funding for innovative and ambitious medium-large scale projects, programmes or events/ festivals with an arts and culture focus; undertake organisational development or support professional development within the arts and culture sector; work with communities that will increase access to arts and culture.
Eligibility requirements for organisations	Bristol-based organisations with at least 6 months of accounts and proven track record.
Date of next application round	Current grants run until March 2022.
Contact email and website address for further information	cityartsfund@bristol.gov.uk www.bristol.gov.uk/museums-parks-sports-culture/arts-and-culture-funding



Bristol City Council: Cultural Investment program - Openness	
Total annual amount available	£480k per annum
Duration/term of grant	4 years
Purpose of grant	Contributes to core funding for established arts & cultural organisations with a year round programme that support the cultural ecology, contribute to Bristol's cultural identity and demonstrate leadership and generosity for the wider sector. Grant funding of no more than 5% of annual turnover and tapering over the duration of funding.
Eligibility requirements for organisations	Organisations with at least 12 months of accounts and proven track record
Date of next application round	Current grants run until March 2022.
Contact email and website address for further information	cityartsfund@bristol.gov.uk www.bristol.gov.uk/museums-parks-sports-culture/arts-and-culture-funding

Bristol City Council: Youth Sector support fund	
Total annual amount available	£162k for grant distribution in year 3 per annum
Duration/term of grant	One year
Purpose of grant	Grants of £10,000 per organisation in any year, up to a maximum of £30,000 in any year for partnership applications, to support Bristol's play and youth sector organisations for the benefit of children and young people aged 8-19.
Eligibility requirements for organisations	This grant programme is open to youth work and play work organisations from the voluntary, community and social enterprise (VCSE) groups based and working in the City of Bristol. Groups must have a constitution and a bank account.
Date of next application round	Online application via Quartet (see link below). Applications can be made at any time - panel meets throughout the year.
Contact email and website address for further information	More information can be found here https://quartetcf.org.uk/grant-programmes/bristol-city-council-youth-sector-support-fund/



Other sources of VCSE support from Bristol City Council

Community Infrastructure Levy

As part of the planning process, a developer often has to give money to the council to pay for improvements in the area they are developing in. This is usually through a planning charge called the Community Infrastructure Levy (CIL) but is sometimes through a planning obligation called Section 106 (S106). 15% of CIL funds and relevant local S106 funds are made available for local decision making by councillors through Area Committees. This is usually for highways improvements, parks improvements and tree planting funds. Areas with a Neighbourhood Development Plan (NDP) receive 25% of CIL funds raised within their area to support the priorities they've identified. Local councillors allocate the funds to support local priority projects, such as improving community centres or parks.

In 2019/20, £3.3 million was allocated (CIL £2.8 million; S106: £0.5 million), of which approximately £1.1 million of this was allocated directly to community groups and VCSE organisations.

Leasing or renting council assets

We lease more than 170 properties to voluntary and community organisations, often at reduced or minimal rents, or preferential terms to the value of approx. £1.3 million. These arrangements range from short-term licences to long leases and this process is known as 'Community Asset Transfer' (CAT)

Local people are often best placed to manage community facilities in their area. They already make extensive use of these assets and their local knowledge and hands-on management often results in lower overheads and better value-for-money. Community organisations also use volunteers and take great pride in their local area.

Managing these facilities helps to empower local communities and can bring opportunities for greater independence and financial sustainability. When done well, CAT can create lasting change in local neighbourhoods.

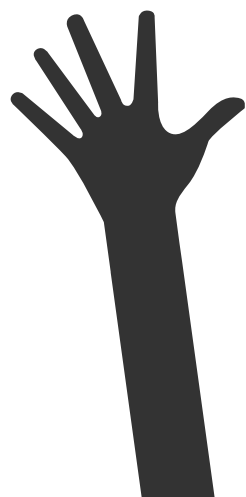
We are fully committed to using our assets to form long-term partnerships with suitable third sector organisations, in order to create stronger, more cohesive and more sustainable communities.

We have adopted a Community Asset Transfer Policy, which sets out the criteria for organisations wishing to apply for CAT. The policy also contains details of the various stages of the application and decision-making process, together with anticipated time scales. Information about the policy is available [here](#)



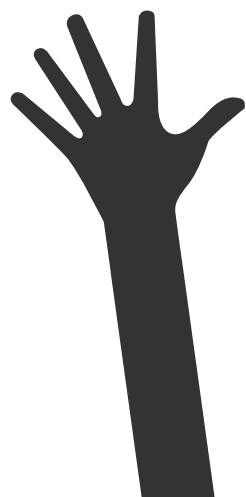
Bristol City Funds

Bristol City Funds: BCH Health and wellbeing grant	
Total annual amount available	Grants of up to £20,000 per year
Duration/term of grant	Maximum of 2 years
Purpose of grant	This fund is aimed at supporting Bristol's health and wellbeing sector. It has been made available by Bristol Community Health (BCH) as part of its legacy to community health in Bristol. The aim is to support lasting change that will make the city more sustainable and more fair, so funding can be awarded to transform and strengthen local organisations themselves or it can be for the delivery of activities that will create change for local people.
Eligibility requirements for organisations	<p>Voluntary, community, charity and social enterprise organisations based and working in the Bristol local authority area which provide health & wellbeing services, prioritising those that:</p> <ul style="list-style-type: none"> • Reflect BCH's historic services, including services in the community for adults and children, and services working with offenders • Focus on prevention and early intervention • Run projects supporting self-care • Support people with or at greater risk of developing long-term health conditions, or • Want to make changes to their organisation that will improve their resilience to public sector contract loss or funding cuts.
Date of next application round	Online application via Quartet https://quartetcf.org.uk/grant-programmes/bch/
Contact email and website address for further information	grant-support@bristolcityfunds.co.uk https://bristolcityfunds.co.uk/



West of England Combined Authority

West of England Combined Authority: Community Transport	
Total annual amount available	To be confirmed
Duration/term of grant	1st July 2021 – 31st March 2022
Purpose of grant	West of England Combined Authority will provide continuity grants to existing schemes until March 2022. This is to allow for a review of community transport going forward.
Eligibility requirements for organisations	Only available to existing schemes, with further details of 2022 funding to be published in future
Date of next application round	N/A
Contact email and website address for further information	transport.operations@westofengland-ca.gov.uk www.westofengland-ca.gov.uk/transport/





If you would like this information in another language, Braille, audio tape, large print, easy English, BSL video or CD-ROM or plain text please contact:

investmentandgrants@bristol.gov.uk

0117 352 5640



1 © Zimba FC | 2 © Knowle West Media Centre