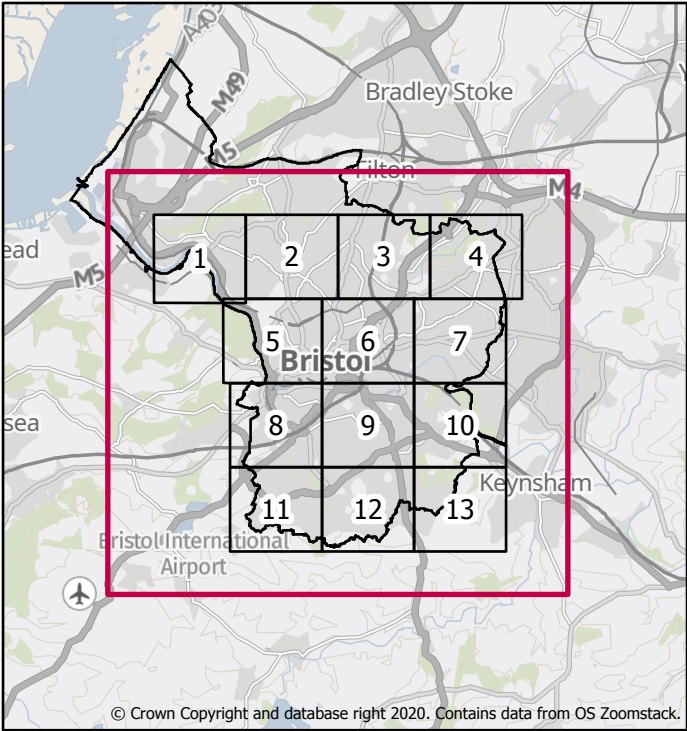
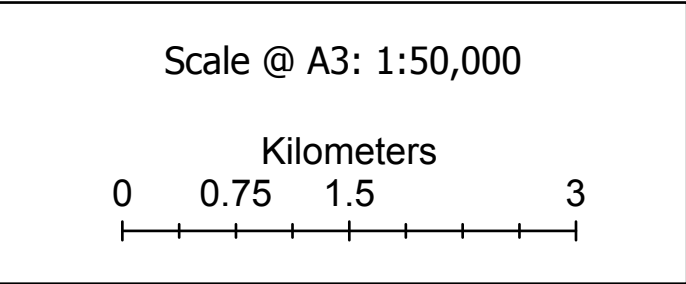


# Level 2 Strategic Flood Risk Assessment

Central Area 1:200 Tidal (combined with 1:2 Fluvial) Flood Defence Failure Scenario 2120 inclusive of Climate Change

- Flood Depth (m)
- 0 - 0.15
  - 0.15 - 0.3
  - 0.3 - 0.6
  - 0.6 - 1
  - 1 - 1.5
  - 1.5 - 2
  - 2 - Max
- Bristol City Boundary







# Level 2 Strategic Flood Risk Assessment

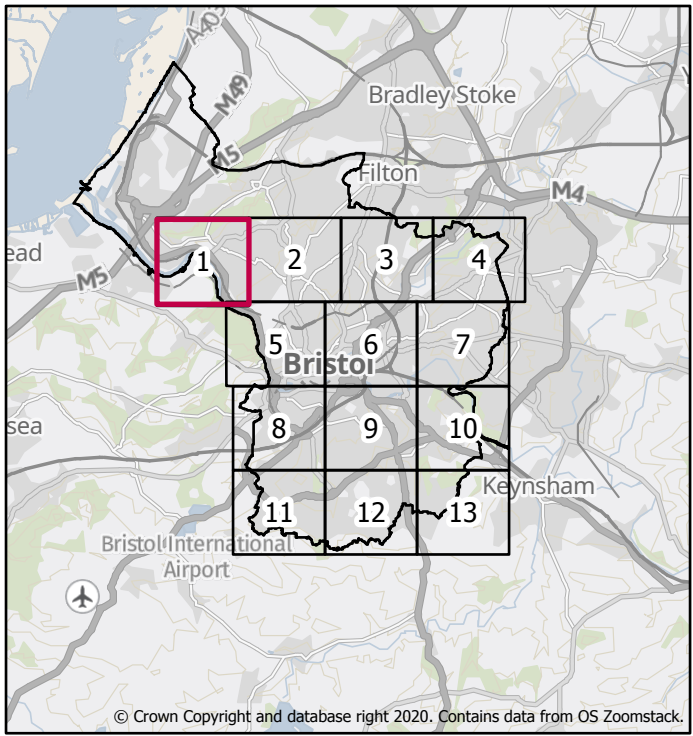
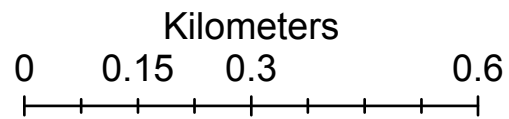
Central Area 1:200 Tidal (combined with 1:2 Fluvial) Flood Defence Failure Scenario 2120 inclusive of Climate Change

Flood Depth (m)

- 0 - 0.15
- 0.15 - 0.3
- 0.3 - 0.6
- 0.6 - 1
- 1 - 1.5
- 1.5 - 2
- 2 - Max

Bristol City Boundary

Scale @ A3: 1:10,000







# Level 2 Strategic Flood Risk Assessment

Central Area 1:200 Tidal (combined with 1:2 Fluvial) Flood Defence Failure Scenario 2120 inclusive of Climate Change

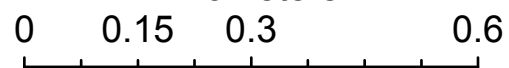
Flood Depth (m)

- 0 - 0.15
- 0.15 - 0.3
- 0.3 - 0.6
- 0.6 - 1
- 1 - 1.5
- 1.5 - 2
- 2 - Max

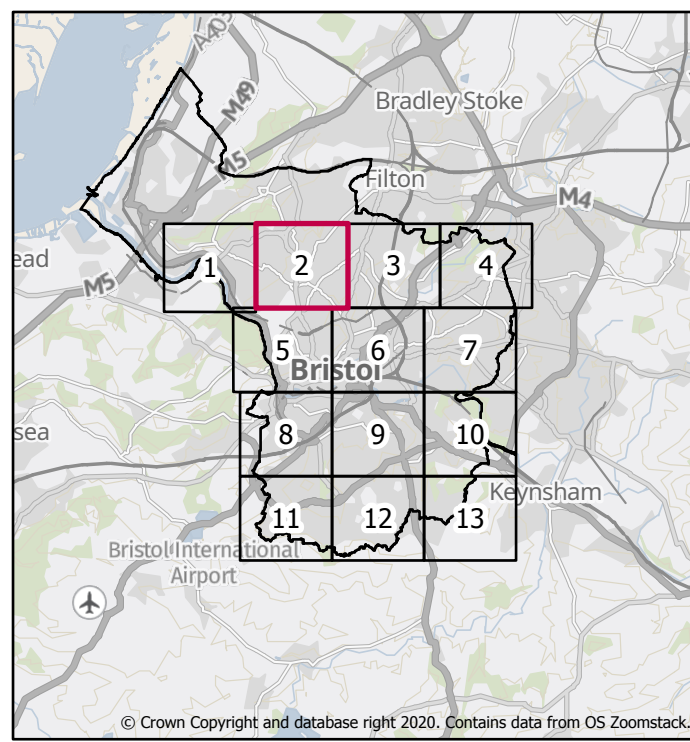
Bristol City Boundary

Scale @ A3: 1:10,000

Kilometers



Page 3 of 14



Created by the Flood Risk Team  
22/03/2022







# Level 2 Strategic Flood Risk Assessment

Central Area 1:200 Tidal (combined with 1:2 Fluvial) Flood Defence Failure Scenario 2120 inclusive of Climate Change

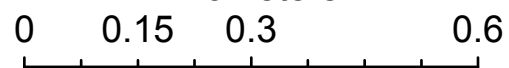
Flood Depth (m)

- 0 - 0.15
- 0.15 - 0.3
- 0.3 - 0.6
- 0.6 - 1
- 1 - 1.5
- 1.5 - 2
- 2 - Max

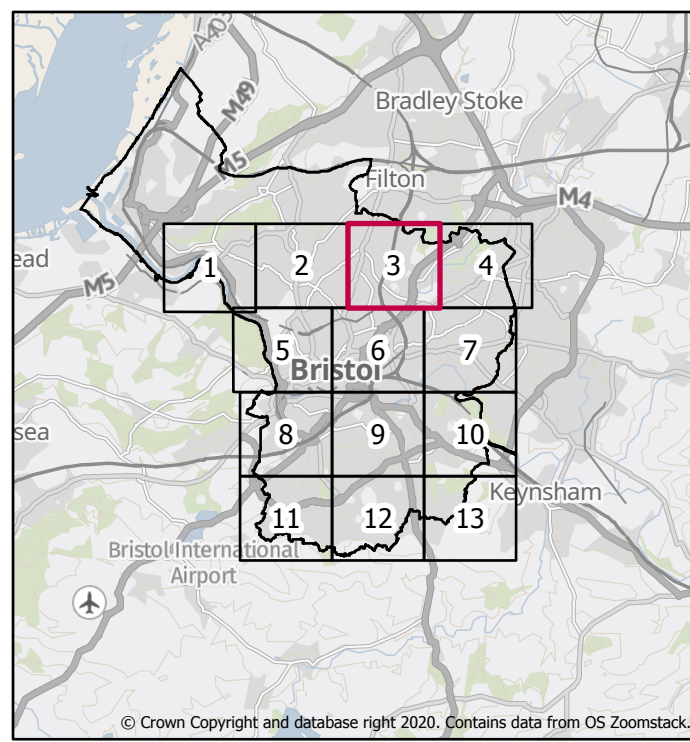
□ Bristol City Boundary

Scale @ A3: 1:10,000

Kilometers



Page 4 of 14



Created by the Flood Risk Team  
22/03/2022





# Level 2 Strategic Flood Risk Assessment

Central Area 1:200 Tidal (combined with 1:2 Fluvial) Flood Defence Failure Scenario 2120 inclusive of Climate Change

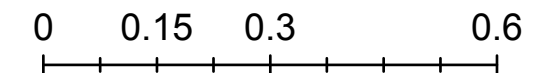
Flood Depth (m)

- 0 - 0.15
- 0.15 - 0.3
- 0.3 - 0.6
- 0.6 - 1
- 1 - 1.5
- 1.5 - 2
- 2 - Max

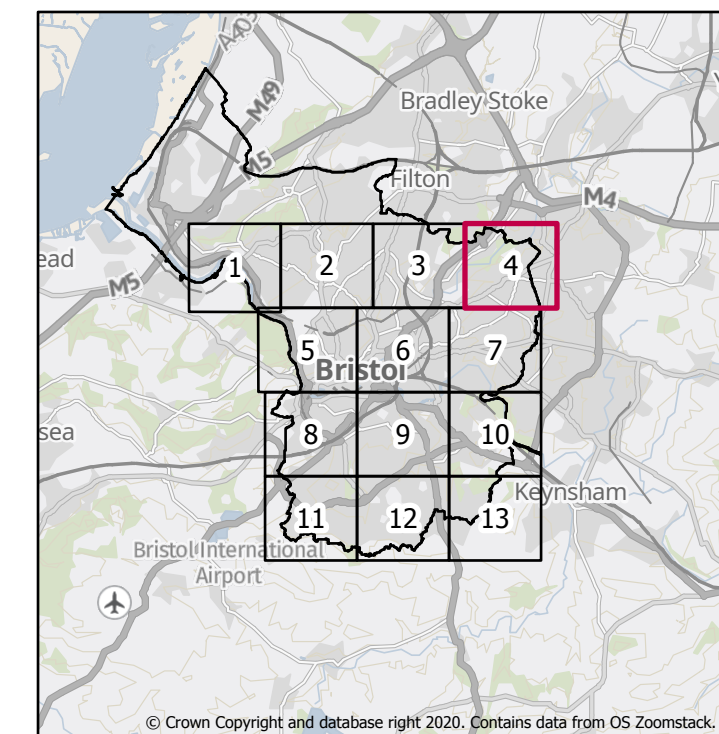
□ Bristol City Boundary

Scale @ A3: 1:10,000

Kilometers



Page 5 of 14



Created by the Flood Risk Team  
22/03/2022





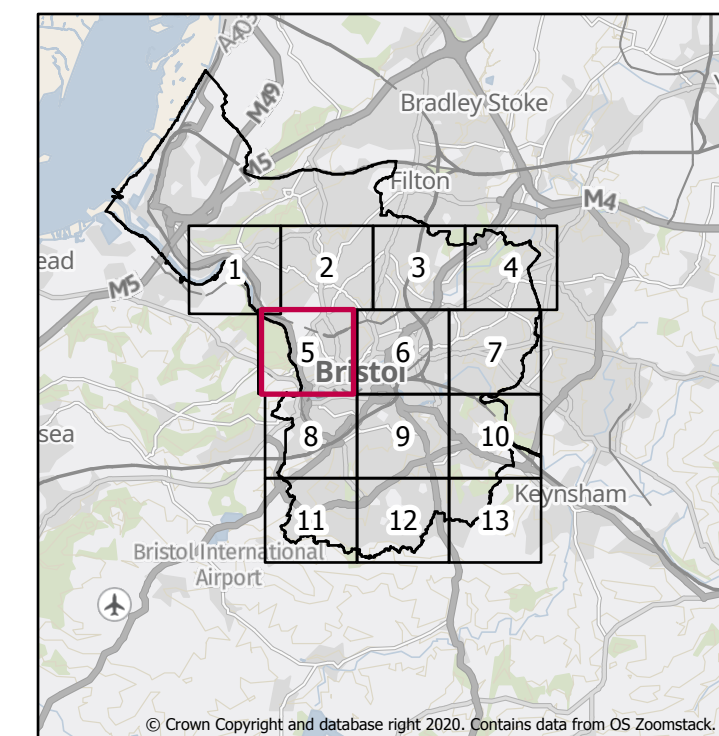
Central Area 1:200 Tidal (combined  
with 1:2 Fluvial) Flood Defence Failure  
Scenario 2120 inclusive of Climate  
Change

0 - 0.15  
0.15 - 0.3  
0.3 - 0.6  
0.6 - 1  
1 - 1.5  
1.5 - 2  
2 - Max

Scale @ A3: 1:10,000

A horizontal number line is shown with tick marks at intervals of 0.05. The labels 0, 0.15, 0.3, and 0.6 are placed above the tick marks at those positions.

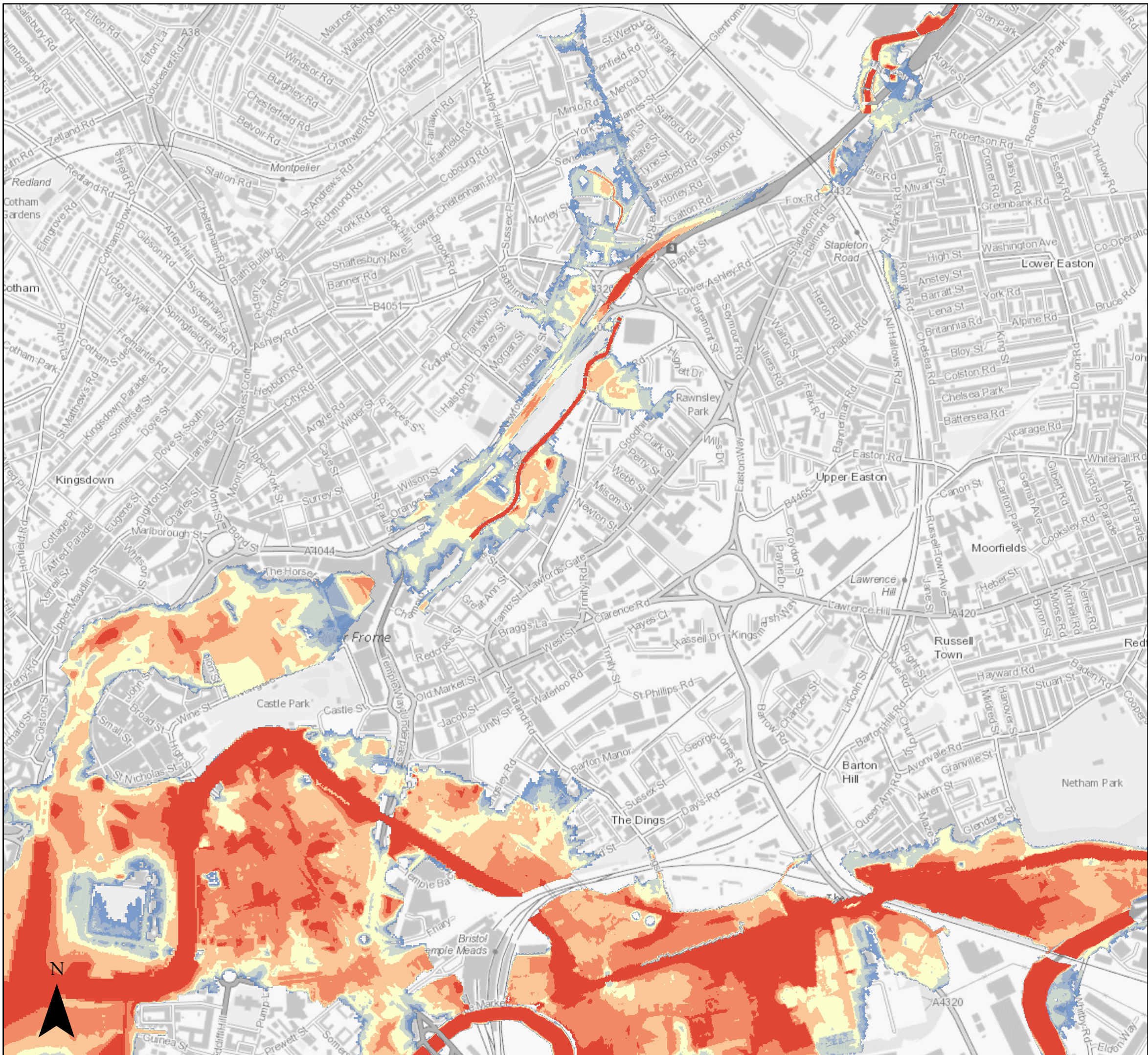
Page 6 of 14



Created by the Flood Risk Team  
22/03/2022



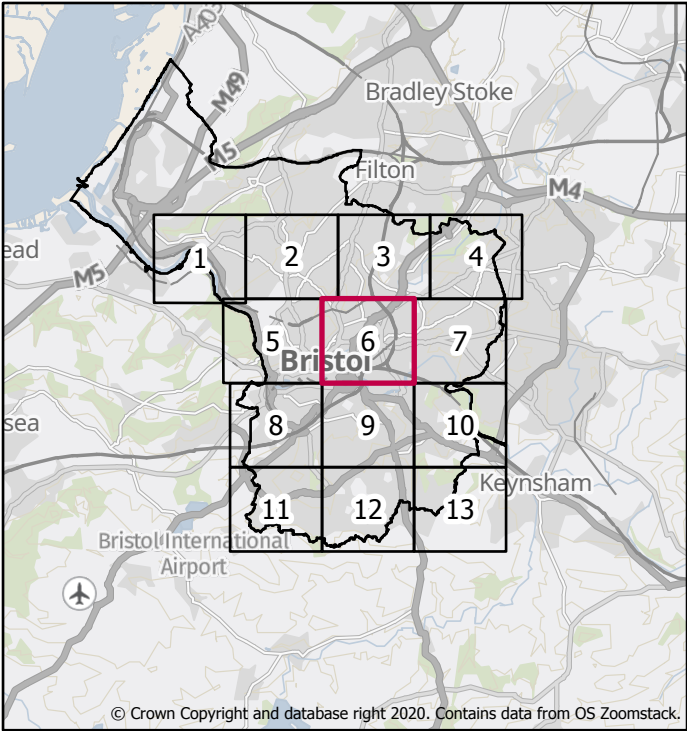
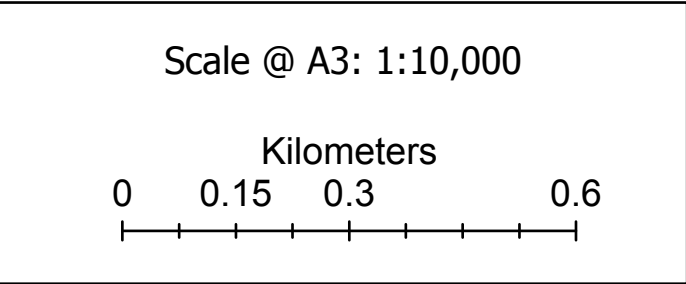




# Level 2 Strategic Flood Risk Assessment

Central Area 1:200 Tidal (combined with 1:2 Fluvial) Flood Defence Failure Scenario 2120 inclusive of Climate Change

- Flood Depth (m)
- 0 - 0.15
  - 0.15 - 0.3
  - 0.3 - 0.6
  - 0.6 - 1
  - 1 - 1.5
  - 1.5 - 2
  - 2 - Max
- Bristol City Boundary





# Level 2 Strategic Flood Risk Assessment

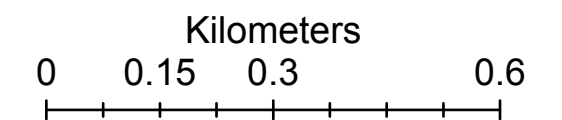
Central Area 1:200 Tidal (combined with 1:2 Fluvial) Flood Defence Failure Scenario 2120 inclusive of Climate Change

Flood Depth (m)

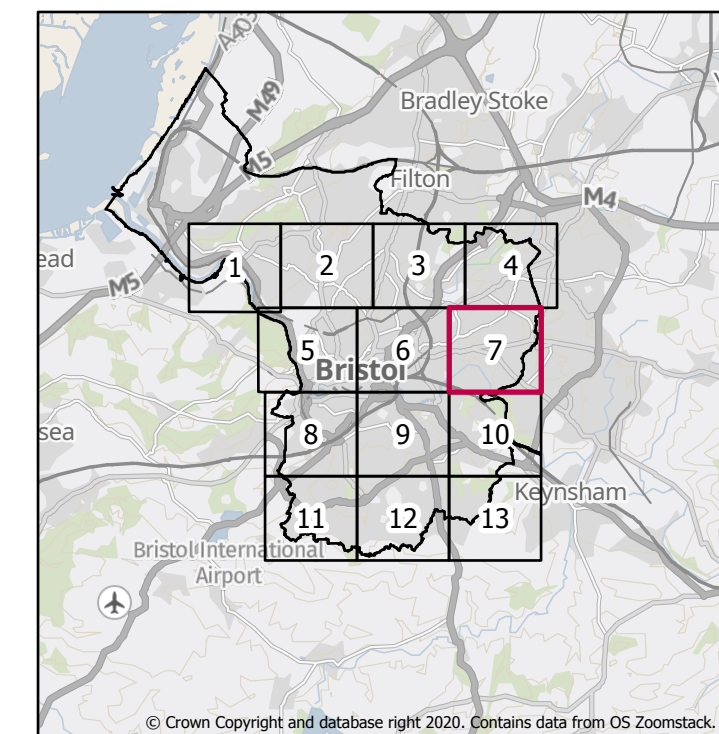
- 0 - 0.15
- 0.15 - 0.3
- 0.3 - 0.6
- 0.6 - 1
- 1 - 1.5
- 1.5 - 2
- 2 - Max

□ Bristol City Boundary

Scale @ A3: 1:10,000



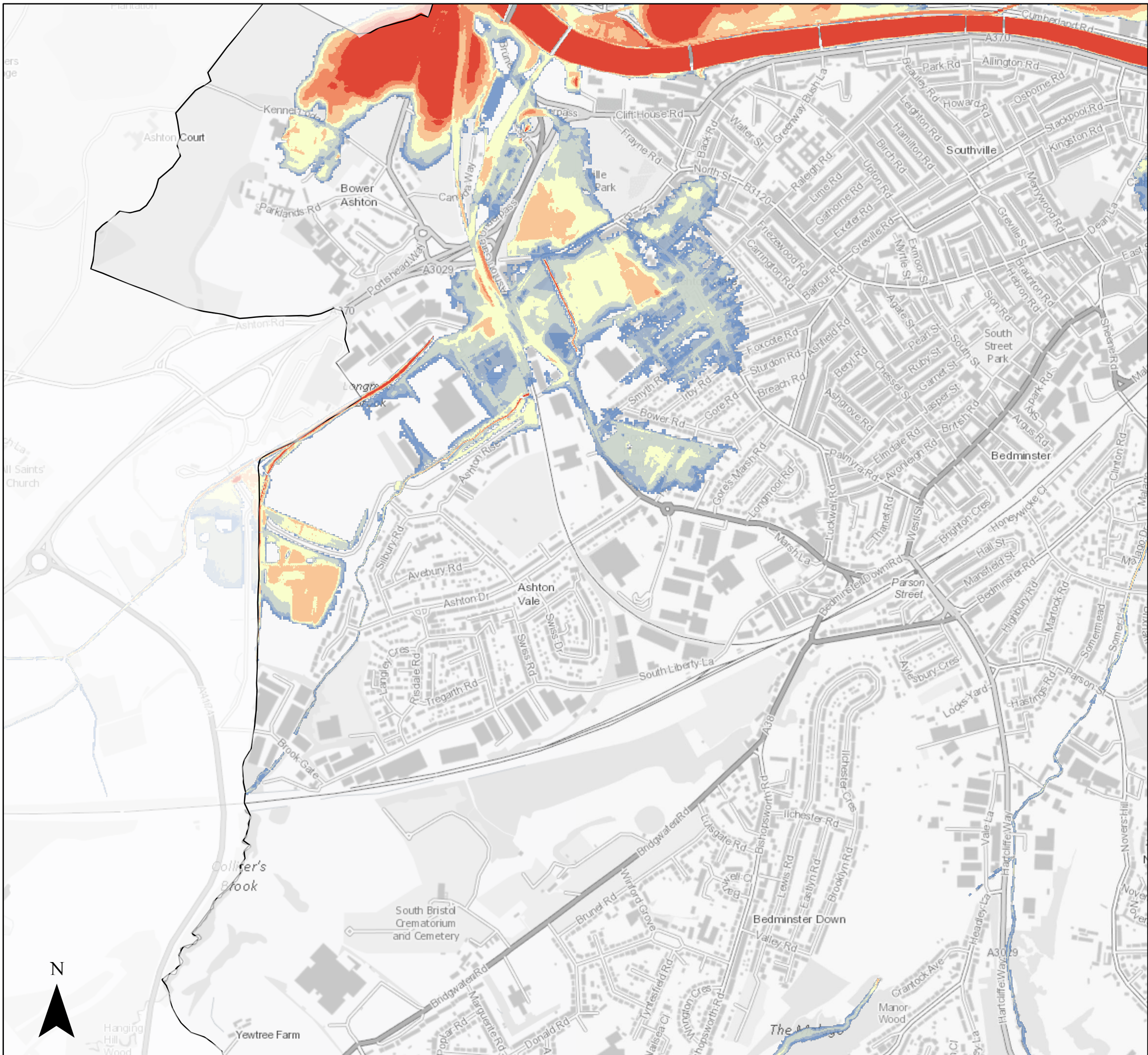
Page 8 of 14



Created by the Flood Risk Team  
22/03/2022



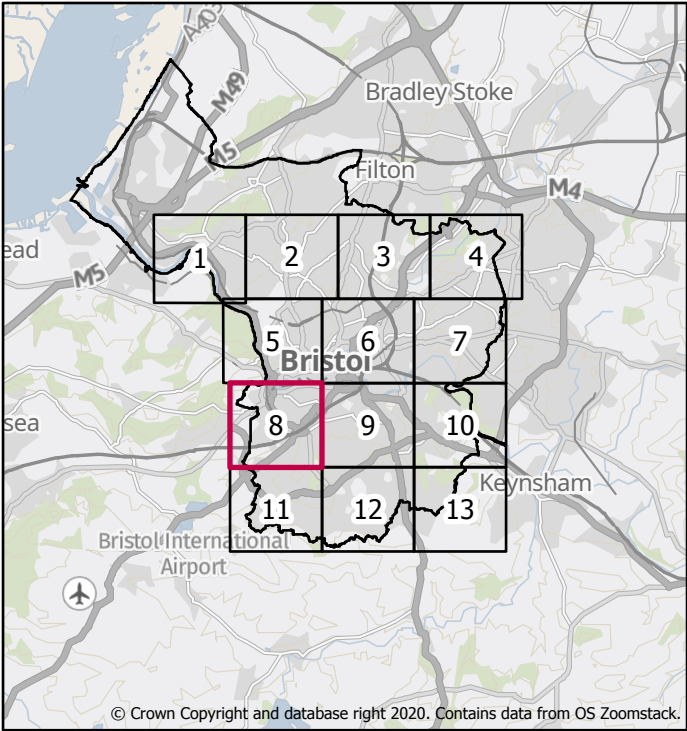
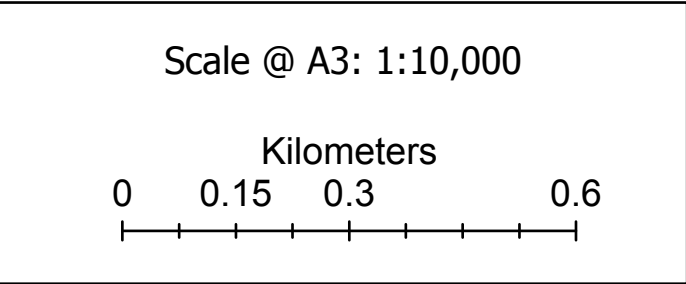




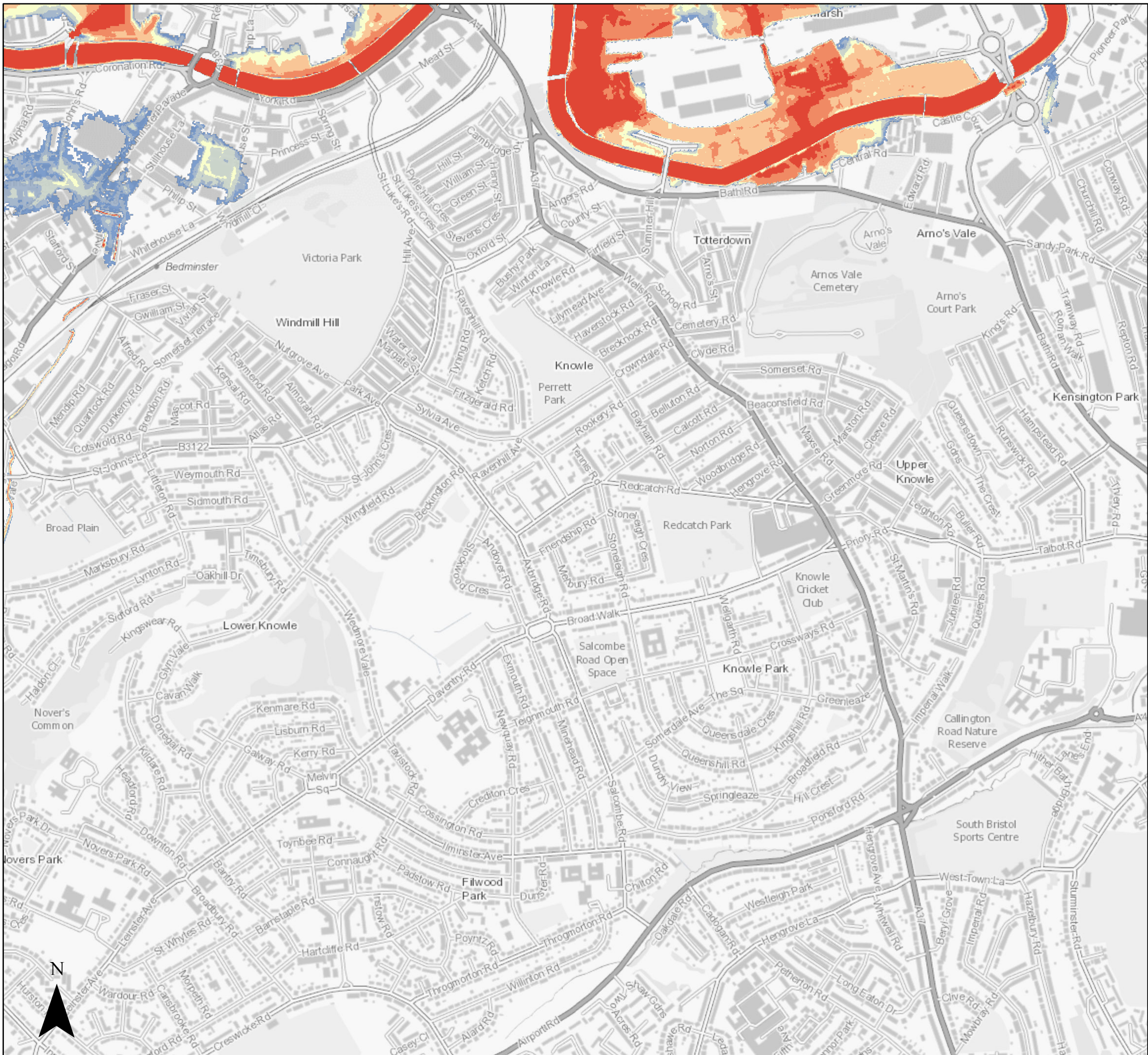
# Level 2 Strategic Flood Risk Assessment

Central Area 1:200 Tidal (combined with 1:2 Fluvial) Flood Defence Failure Scenario 2120 inclusive of Climate Change

- Flood Depth (m)
- 0 - 0.15
  - 0.15 - 0.3
  - 0.3 - 0.6
  - 0.6 - 1
  - 1 - 1.5
  - 1.5 - 2
  - 2 - Max
- Bristol City Boundary



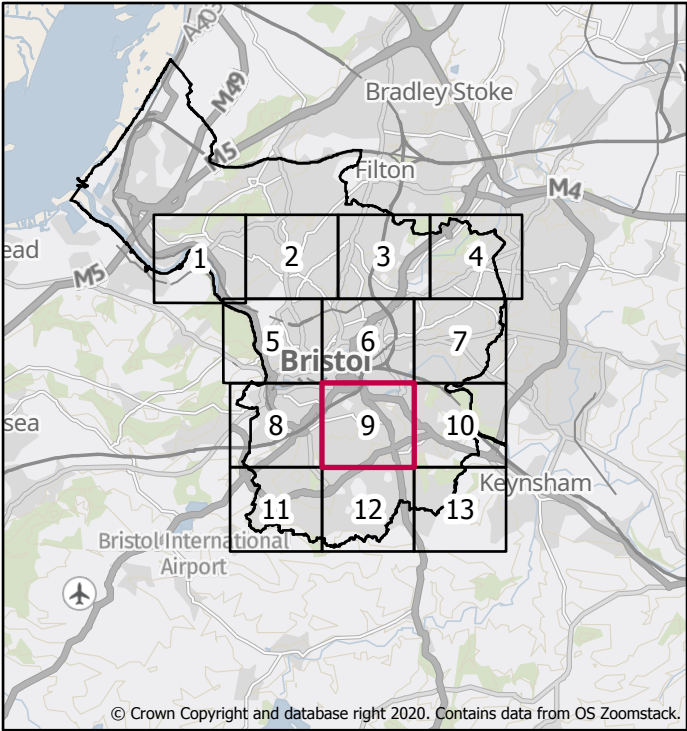
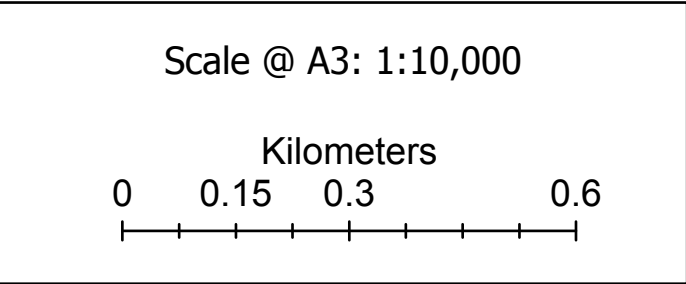




# Level 2 Strategic Flood Risk Assessment

Central Area 1:200 Tidal (combined with 1:2 Fluvial) Flood Defence Failure Scenario 2120 inclusive of Climate Change

- Flood Depth (m)
- 0 - 0.15
  - 0.15 - 0.3
  - 0.3 - 0.6
  - 0.6 - 1
  - 1 - 1.5
  - 1.5 - 2
  - 2 - Max
- Bristol City Boundary



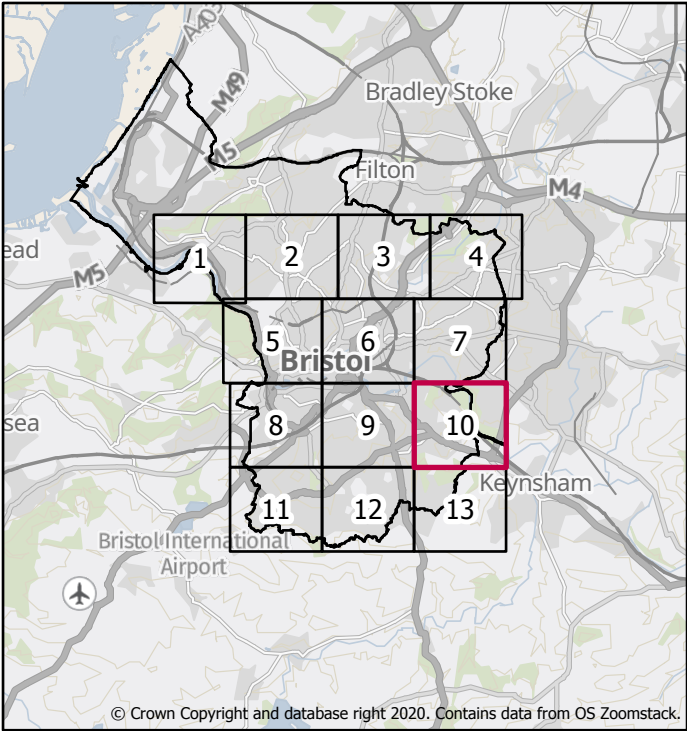
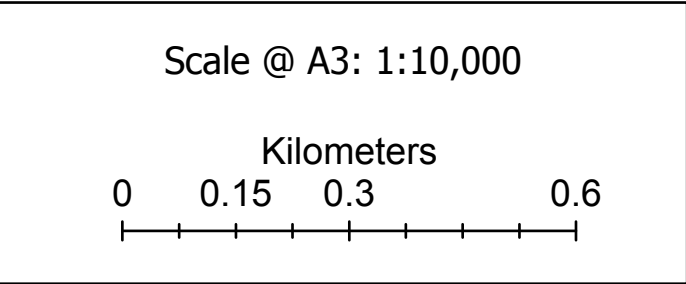




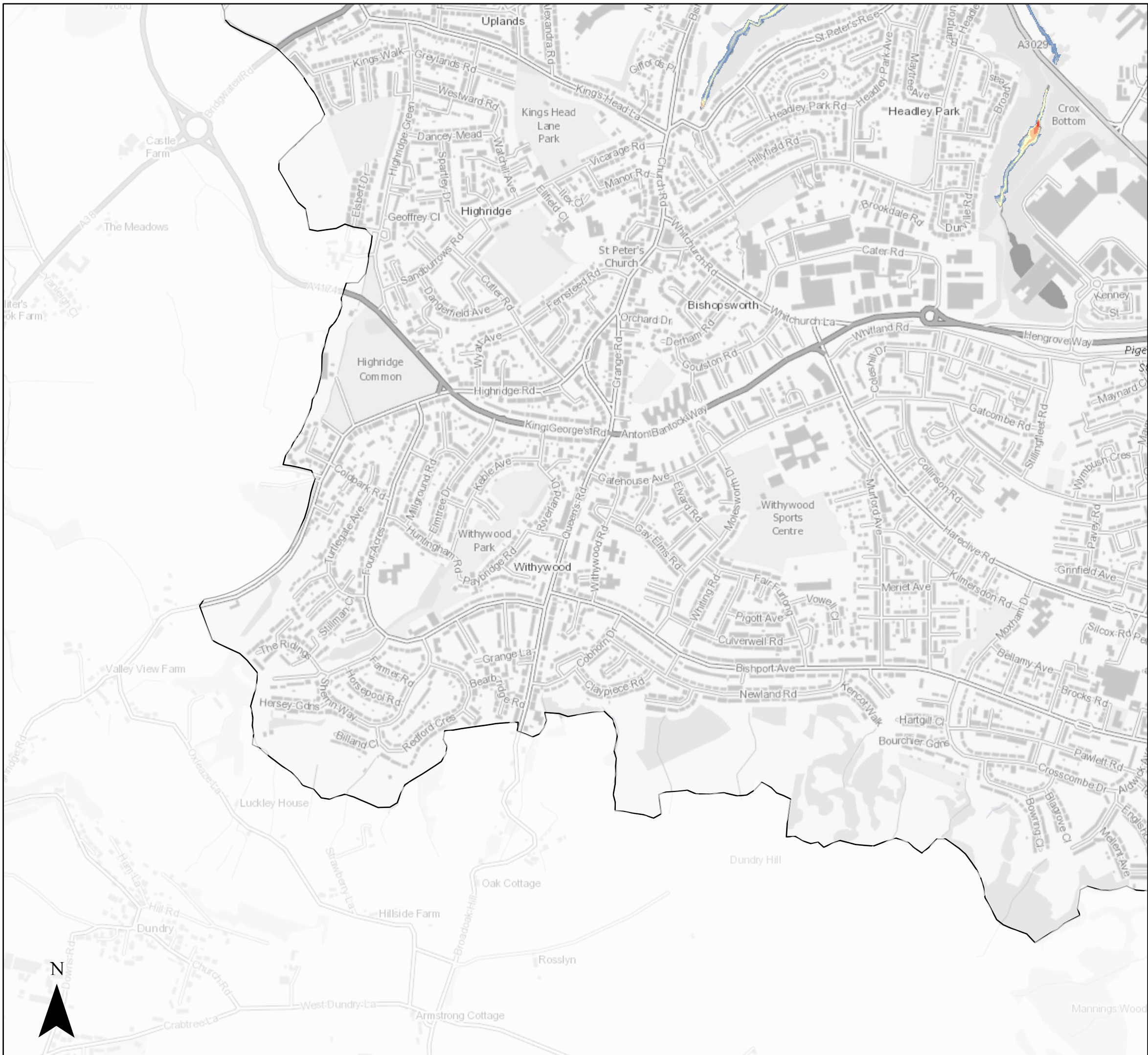
# Level 2 Strategic Flood Risk Assessment

Central Area 1:200 Tidal (combined with 1:2 Fluvial) Flood Defence Failure Scenario 2120 inclusive of Climate Change

- Flood Depth (m)
- 0 - 0.15
  - 0.15 - 0.3
  - 0.3 - 0.6
  - 0.6 - 1
  - 1 - 1.5
  - 1.5 - 2
  - 2 - Max
- Bristol City Boundary



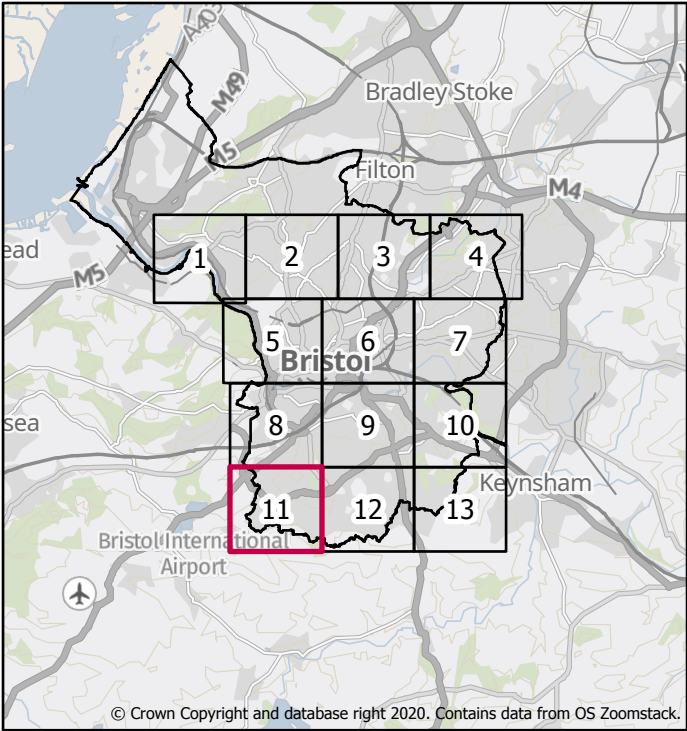
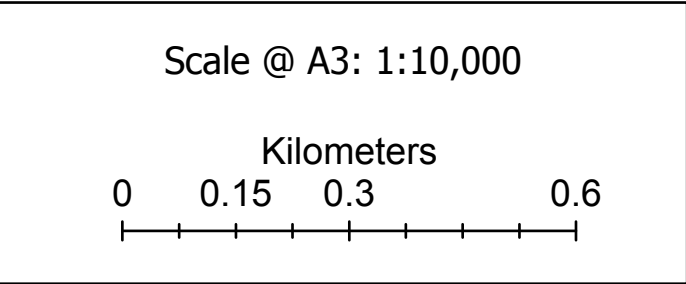




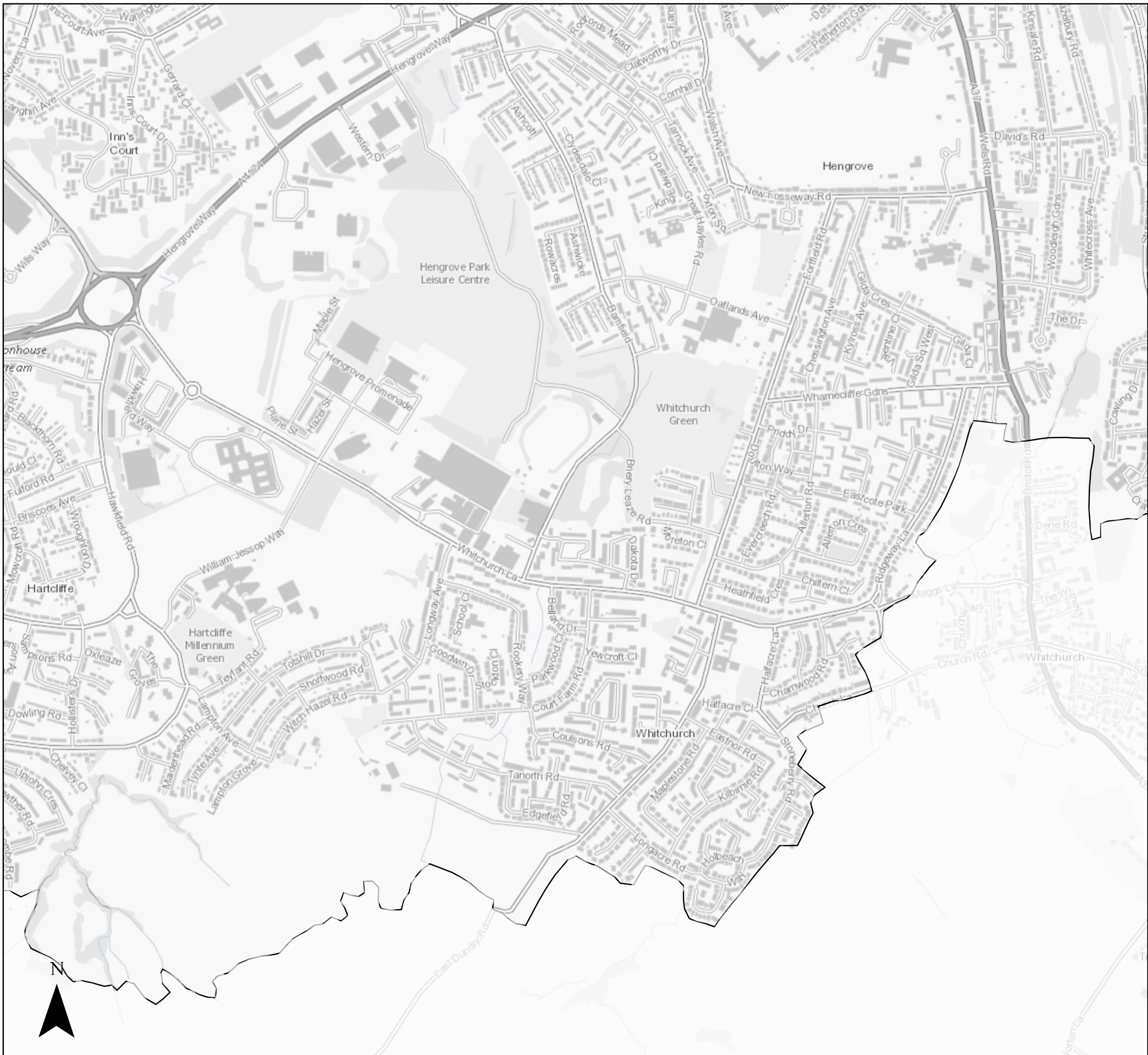
# Level 2 Strategic Flood Risk Assessment

Central Area 1:200 Tidal (combined with 1:2 Fluvial) Flood Defence Failure Scenario 2120 inclusive of Climate Change

- Flood Depth (m)
- 0 - 0.15
  - 0.15 - 0.3
  - 0.3 - 0.6
  - 0.6 - 1
  - 1 - 1.5
  - 1.5 - 2
  - 2 - Max
- Bristol City Boundary







# Level 2 Strategic Flood Risk Assessment

Central Area 1:200 Tidal (combined with 1:2 Fluvial) Flood Defence Failure Scenario 2120 inclusive of Climate Change

Flood Depth (m)

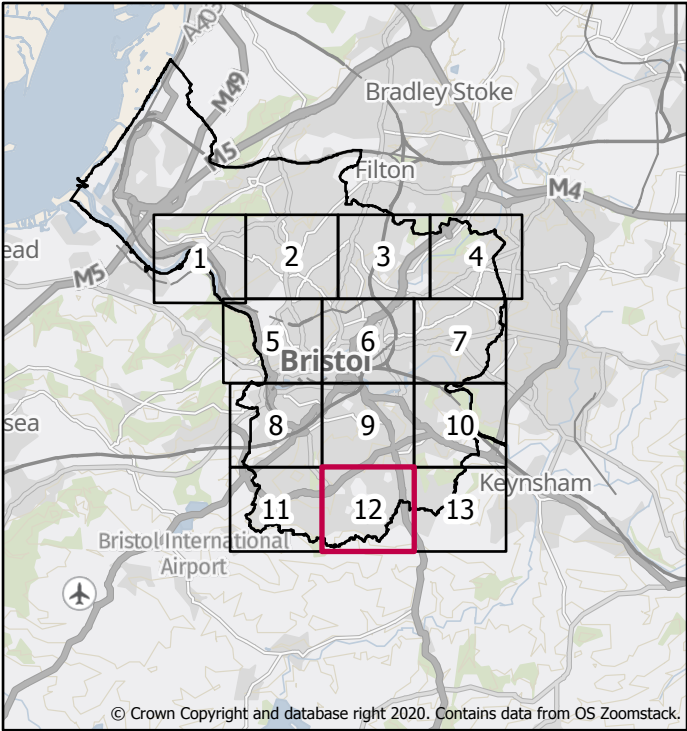
- 0 - 0.15
- 0.15 - 0.3
- 0.3 - 0.6
- 0.6 - 1
- 1 - 1.5
- 1.5 - 2
- 2 - Max

□ Bristol City Boundary

Scale @ A3: 1:10,000

Kilometers

0 0.15 0.3 0.6







# Level 2 Strategic Flood Risk Assessment

Central Area 1:200 Tidal (combined with 1:2 Fluvial) Flood Defence Failure Scenario 2120 inclusive of Climate Change

Flood Depth (m)

- 0 - 0.15
- 0.15 - 0.3
- 0.3 - 0.6
- 0.6 - 1
- 1 - 1.5
- 1.5 - 2
- 2 - Max

Bristol City Boundary

