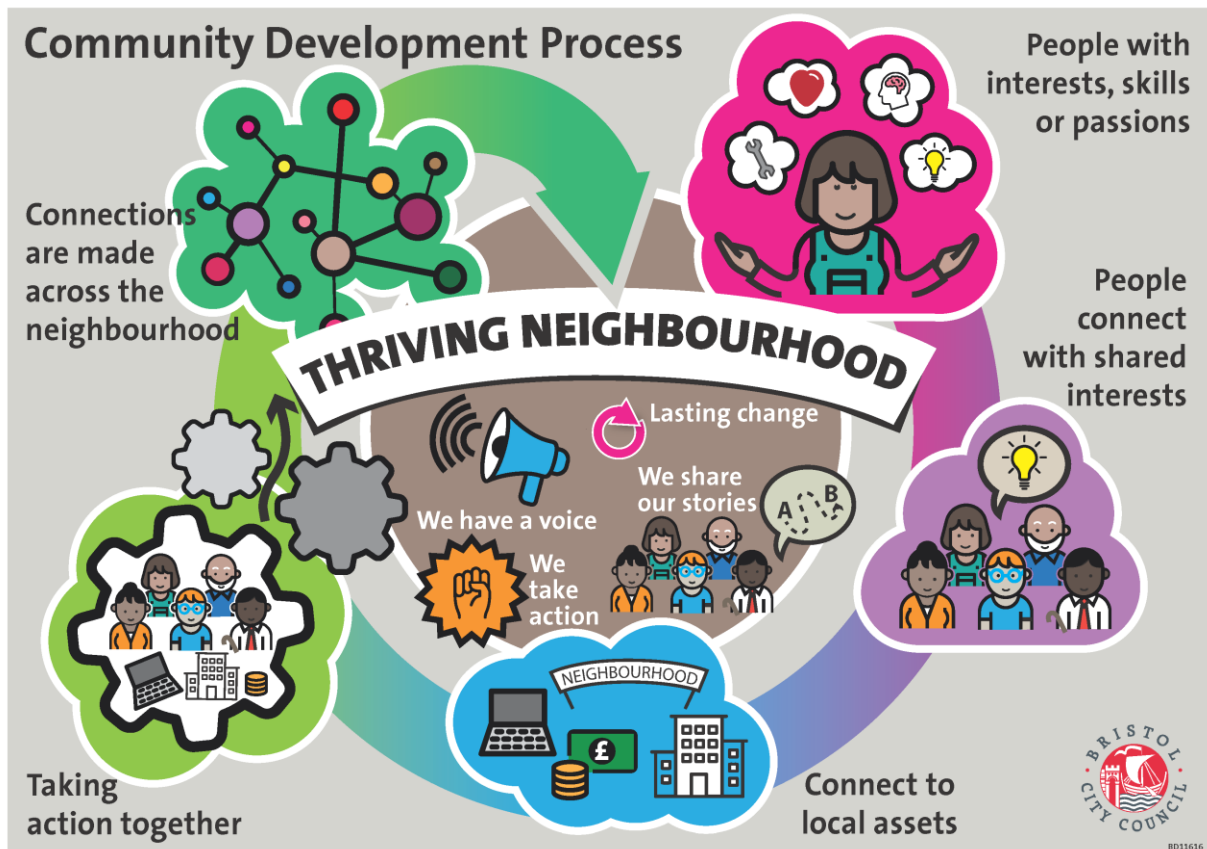


Community Development Offer

Bristol City Council

The Community Development Team sits within the Neighbourhoods and Communities Service, alongside the Community Resources and Neighbourhood Services Teams. The team is split North (managed by Mohammed Elsharif) and South (managed by Terry Black), with the River Avon forming the divide. Redcliffe falls within the South Team due to the way people access services there.



This is our community development offer for citizens, voluntary sector partners, local businesses and other Bristol City Council departments working in our priority neighbourhoods and across the city.

Community Development Support



We will deliver on the ground community development work to the communities that most need it.

We'll work in at least ten priority neighbourhoods and communities of interest with a focus on race and disability equality.

We'll work in collaboration with citizens and partners to meet the aspirations of local people, driven by them.

North Priority Neighbourhoods: Avonmouth, Henbury, St Pauls, Easton, Lawrence Hill, Frome Vale and Hillfields

South Priority Neighbourhoods: Hartcliffe and Withywood, Filwood, Greater Bedminster, Redcliffe, Hengrove and Whitchurch (including Imperial Apartments) and Stockwood

Thematic Working



We will support partnership working and deliver high quality community development work under targeted thematic headings as opportunities are identified.

Our current themes are: Placemaking (Temple Quarter, Frome Gateway and Knowle West), Parks and Green Spaces, Safer Streets (Hartcliffe and Bedminster), Youth Empowerment and Resilience (Inner City) and Integrated Care Partnerships.

Community Cohesion and Equity

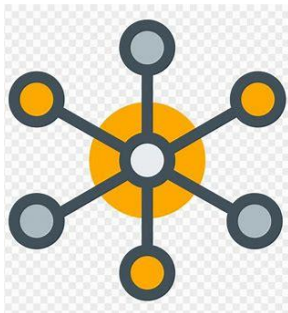


We will continue to work alongside strategic partnerships in the city that promote community cohesion.

We will create opportunities and spaces for our diverse communities to meet from across the city. Where they can share their experiences, gain better understanding of each other and collaborate together.

In our priority neighbourhoods work we will prioritise working alongside the most marginalised communities to support grassroots community action.

Community Hubs



Building on our experiences from COVID19 and Cost of Living Crisis, we will grow and support a network of community hubs across the city that offer:

- Local area co-ordination
- Builds local networks
- Supports communications across their community
- Supports citizen led social action
- Takes an active role in a thriving community hub network

Community Champions

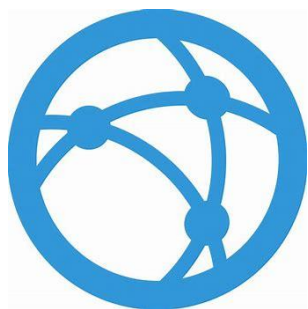


Community champions have been key at supporting health messages and connecting services into communities that face multiple barriers in accessing them.

We currently have 30 organisations participating and 48 community champions in the city.

We will continue to grow and develop a network of community champions in all parts of the city.

City Wide Networks and Influence



We will provide spaces where our partners and colleagues can come together, share ideas, experiences and influence key decision makers in the city.

We currently host a community exchange meeting which is bi-weekly for voluntary sector partners to connect with each other and city council.

We also support the Mayors Conversation with Community Workers which is monthly and links community workers directly into policy decisions around the One City Plan.

We will produce and share stories of community led social action from across the city.

Asset Based Community Development Learning and Professional Development



We will deliver high quality workshops where people can learn about Asset Based Community Development and share their experiences with each other.

We will host learning circles where practitioners can deepen their practice and refine their skills in a peer learning environment.

We will support citizens to come together and share their stories, and exchange ideas to take social action in their communities.

We will connect with partners and be part of a network of practitioners from across the UK to share our experiences and learn from others.